

Heperi
Kaiārahi Kaupapa Māori Lead - Academic

Ara Ako,
Ara Mahi

Study & Career Guide

2023



Te Puna Wānaka



Institute of Canterbury
Ara rau, taumata rau



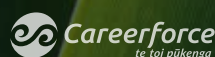
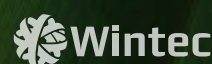
Te Pūkenga

Nau mai haere mai ki Te Pūkenga Welcome to Te Pūkenga

Te Pūkenga is building a national network of integrated learning in Aotearoa New Zealand that better meets the needs of learners, their whānau, employers and the community.

By bringing together on-the-job, on campus and online learning, Te Pūkenga is creating a network that gives learners more choices and flexibility in what, where and how they learn.

Open Polytechnic
KURATINI TUWHERA



Te Pūkenga



TOI-OHOMAI



Please note our programmes of study are currently under review as part of the reform of vocational education training. The objective is to provide one programme for Te Pūkenga that is portable, consistent, and more closely aligned with the needs of industry. As the review is ongoing, this prospectus is correct at the time of publishing but the courses outlined may change over time.

Learn with purpose
tepūkenga.ac.nz



Kia ora huihui mai tātou.

It's my pleasure to be able to provide an introduction in this 2023 prospectus and welcome you to Te Pūkenga, nei te reo rāhiri e rere atu ana – nau piki mai, nau kake mai ki Te Pūkenga.

In 2020, the government reviewed the vocational education system in Aotearoa New Zealand and made some significant changes for how it would work in the future.

One of those changes was the creation of Te Pūkenga, New Zealand Institute of Skills and Technology. The change meant that all of the country's Kura Tini, Institutes of Technology and Polytechnics such as Ara as well as some of the country's Industry Training Organisations which focus on work-based learning such as apprenticeships, will now sit within one organisation – Te Pūkenga.

By bringing these organisations together, it means we can create a national network of on-the-job, on campus and online learning opportunities that give learners more choice and flexibility in what, where and how they learn throughout Aotearoa New Zealand.

For those of you thinking of enrolling with Ara for study in 2023, this means you are going to be enrolling with a national organisation and you will

receive a qualification from Aotearoa New Zealand's largest education provider, Te Pūkenga.

You'll still be able to study in Canterbury but you'll have the additional benefits that come from being part of a national network – such as more support, more study options and increased ability to switch between different types of learning if your circumstances change.

A national network means we can plan better for the future needs of Aotearoa. We want to make sure that when you enrol in a programme, you are gaining skills that are needed by Aotearoa and around the world – giving you more job security and ultimately increasing your opportunities for success.

Our transformation is a journey that will take time but one thing is clear, everything we do is centred around our learners and their whānau. We have a relentless focus of equity and we're setting the foundations to deliver to Te Tiriti o Waitangi and its principles, and most importantly to the aspirations of Māori learners, their whānau, and iwi/hapū.

Throughout this prospectus you may notice that a number of programmes are changing.

We are unifying programmes to make sure they are consistent across the country. This means if your circumstances change, you'll be able to continue with your study rather than having to start again. It's just one of the ways we are working to make learning fit around life, rather than making life fit around learning.

Whether you're looking to continue with your study or try something fresh, we look forward to you joining Te Pūkenga whānau and being part of this transformational journey with us.

Mā te kimi ka kite. Mā te kite ka mōhio. Mā te mōhio ka mārama – Seek and discover. Discover and know. Know the world of light is yours to behold.

If you have any questions or want to find out more about Te Pūkenga, visit our website tepukenka.ac.nz or email us at info@tepukenka.ac.nz – we'd love to hear from you.

Peter Winder
Acting Chief Executive



Please note:

Ara Institute of Canterbury is now part of Te Pūkenga - New Zealand Institute of Skills and Technology. Please note that these programmes of study are currently under review as part of the reform of vocational education training. The objective is to provide unified programmes for Te Pūkenga that are portable, consistent, and closely aligned with the needs of industry. As the review is ongoing, this information is correct at the time of publishing but the courses outlined may change over time.

Information within this brochure is subject to change. Ara reserves the right to amend or withdraw courses.

Kia ora! Welcome

Whether you're fresh out of school, seeking a new direction, or just keen to get ahead in the workplace, choosing where to study is a big decision. You want to be sure that your choice suits your learning style and equips you with the skills you need to achieve your goals. You also want to be confident that you'll get the support you require throughout your study journey, and that you'll enjoy the experience of being a student.

At Ara, we're committed to ensuring that you have a positive learning experience and graduate work-ready with the skills, knowledge and experience you need to enjoy a successful career, anywhere. In short, your success and wellbeing is our priority.

With campuses across Canterbury, plus more than 150 full-time, part-time, online, blended and distance learning options, we provide as much flexibility as possible to help you fit study around work, family and other commitments.

When you study with us, you'll enjoy a strong sense of belonging within an inclusive, multicultural environment made up of around 14,000 domestic students and 600 international students.

You'll never just be a number or a face in a crowd though. Your tutors and other Ara staff will get to know you, and because our class sizes are generally small, you'll get to know your classmates too. You'll collaborate with them on projects, and through a wide range of events and social activities on campus plus many student clubs and groups you can join, you'll also meet students studying other subjects.

During your studies, we'll equip you with the skills employers want and we'll give you work placement opportunities that prepare you for the realities of the job.

We'll also support you throughout your time at Ara - whether you have academic or personal challenges affecting your study, or you need assistance with accommodation, transport, childcare, healthcare, disability support or career guidance.

Ara qualifications are internationally-recognised and respected. Once you have yours, the world is your oyster. We know, because our graduates can be found working and making a difference across the globe, as well as throughout Aotearoa New Zealand.

Whatever path you wish to pursue, we'll pull out all the stops to help you achieve your goal. We look forward to welcoming you into our friendly and vibrant community soon.

Helpful Tip

Our website is where you'll find the most up-to-date and comprehensive information on all study options at Ara, including full details of each programme plus any new courses that have been added since this brochure was produced. If you can't find what you're looking for, call us - we'll be happy to help.

ara.ac.nz | 0800 24 24 76



Contents

About Ara

The Ara Advantage	8
How to apply	53
Locations and contact details	53
Open days and campus tours	53

Choosing your next step

Still at school or recently finished?	10
Seeking a fresh start or a new direction?	12
Time to sharpen your tools?	14
Choosing a subject to study	16
Levels of study at Ara	17





Study options

Business & Digital Technologies	18
Business; Digital Technologies	
Creative Industries	22
Art & Design; Broadcasting & Media; Performing & Music Arts	
Engineering & Architecture	26
Engineering; Architectural Studies	
Health	30
Health Sector; Human Services; Sport, Nutrition & Health Promotion	
Hospitality & Service Industries	34
Hospitality, Cookery & Bakery; Travel & Tourism; Hair & Beauty; Massage Therapy	
Language, Culture & Education	38
Early Childhood Education; English Language; Māori/Pacific Language & Culture; Supported Learning; Foundation Skills; Teacher Education; Sustainability & Outdoor Education	
Science	44
Science; Animal Science	
Trades	47
Automotive Trades; Engineering Trades; Building & Carpentry; Electrical; Joinery; Painting & Decorating; Plumbing, Gasfitting & Drainlaying	



Experience the Ara Advantage

Our goal is to advantage you with courses that matter, taught by inspirational mentors, in real-life learning environments so that by the time you graduate, you're confident, work-ready and equipped to succeed - wherever life may take you. We call it the Ara Advantage.



Courses that matter

All our courses are designed in consultation with industry to ensure you learn exactly what you need to know and gain the skills employers want.



“
The course focuses on hands-on skills that are relevant to the industry.”
”
Siyun,
New Zealand Diploma
in Quantity Surveying

Inspiring mentors

Our tutors come from industry; they have years of real-world experience and contacts to share with you. They're committed to your success and will inspire you to achieve your study goals.



“
The tutors are amazing - they really bring out the best in you.”
”
Stevie,
Diploma in Beauty
Therapies & Epilation

Real-life learning

Much of your time at Ara will be spent applying what you're learning to real tasks and projects in environments that mimic real workplaces, to give you valuable experience before you graduate.



“
It's been practical right from the get-go.”
”
Keren,
Bachelor of
Musculoskeletal Health

Work-ready when you graduate

All that you do and learn at Ara will ensure that your transition to the workplace is seamless and that you have the confidence and capability to contribute from day one.



“
The degree sets you up incredibly well for working in this industry.”
”
Meg,
Bachelor of Sustainability
& Outdoor Education

Plus...

- You'll be treated as an individual and never just be a face in a crowd
- You'll be supported all the way with an extensive array of student services and specialist support staff
- You'll enjoy a strong sense of belonging within an inclusive, multicultural environment

Still at school or recently finished?

Experience Ara events

Dual Enrolment courses 

Career advice

Youth Guarantee courses 

Fees-free study

Scholarships

Student exchanges

If you're in Year 11, 12 or 13 at school, our extensive range of **Experience Ara** events provides a great way to get a feel for tertiary study. With Experience Ara, you can explore subjects you're interested in with fun, hands-on activities; gain credits towards NCEA with a STAR course; tour our campuses; attend an open day or learn how to submit an application for your study option of choice.

Dual Enrolment courses are another way to experience tertiary study while you're still at school. You spend a day or two a week at Ara, and the rest of the week at school. It's a great opportunity to earn NCEA credits and get a head start in a subject you want to study when you leave school.

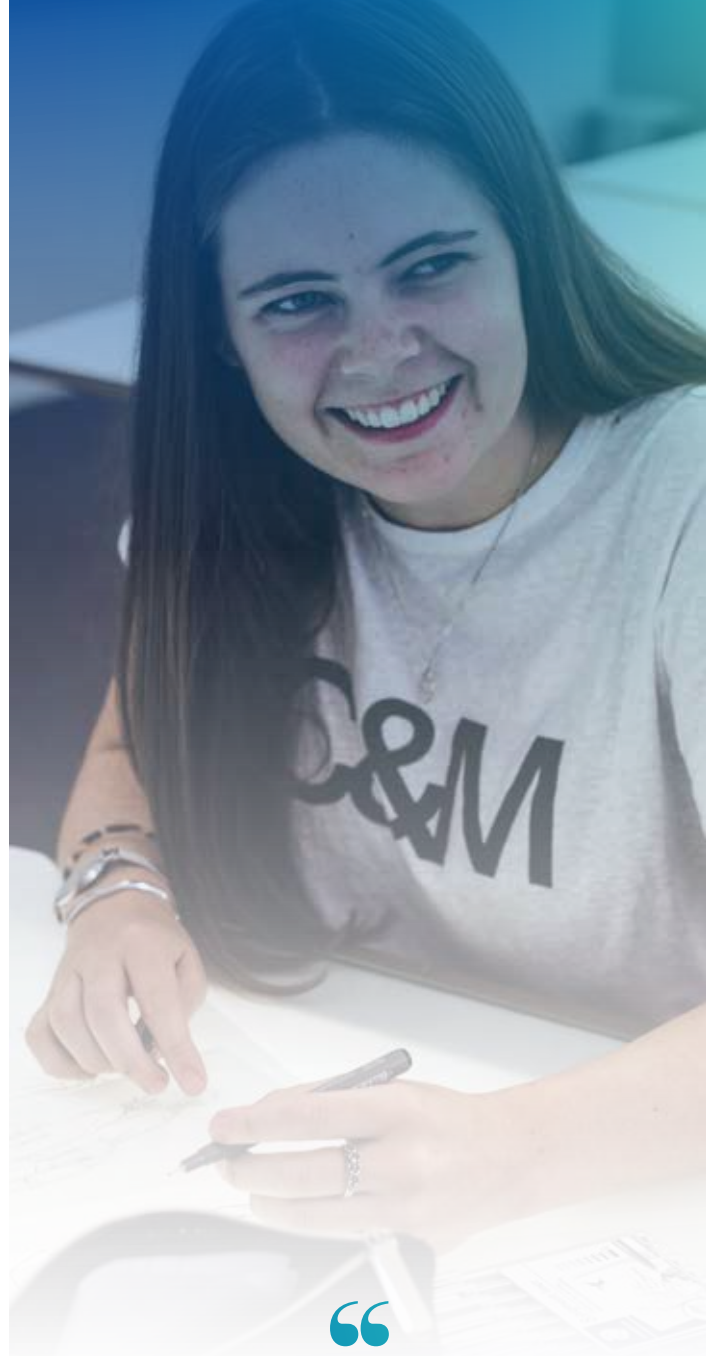
Contemplating full-time study at Ara? Our **Careers & Employment** team can help you explore your study and career options and give you career planning advice, all at no cost.



If you're 16 - 19 years old and not at school or working, a free **Youth Guarantee** course is the smart way to get ahead. You'll gain foundation skills for employment or further study and you'll be able to make confident decisions about your future. You'll also receive extra pastoral care, transport support and guidance as you transition into work or further tertiary study. Even better, in most cases Youth Guarantee courses don't affect your eligibility for fees-free study at a higher level later on.

The government's **fees-free study** initiative means that your first year of study is free, so long as you meet the eligibility criteria. If you're not eligible for fees-free study, or if you're studying for longer than a year, be sure to check out our wide range of **Ara scholarships** - you could save thousands of dollars in fees.

Got itchy feet? How about combining study and travel with an Ara **student exchange**. We have partnerships with educational institutes around the world, potentially allowing you to complete some of your study while experiencing life in another country.



“

You definitely
feel ready to go
out and get a
job when you
finish.

”

Rosalie,
Fashion Technology and Design

Seeking a fresh start or a new direction?

Career advice

Next Step Centre for Women

Foundation studies

He Toki courses 

Pacific Trades Training courses 

Fees-free study

Scholarships

Ready to re-enter the workforce after raising the kids? Out of work and needing skills for a new career? Just not sure what you want to do next? At Ara we can help you find that fresh start or new direction, and support you to achieve your goals.

If you're contemplating studying with us, our **Careers & Employment** team can help you explore your study and career options and give you career planning advice, for free.

For women, our **Next Step Centre for Women** offers a range of confidence-boosting courses on topics like self-esteem, assertive communication and self-development. Enhance your sense of self-worth, develop your potential and expand your possibilities in a friendly, supportive environment.



We've also got **Foundation Studies** courses designed as stepping stones to further study or a new career. They're ideal if you don't meet the entry criteria for a particular course, if you've not been in formal education for a while, or if you're looking for a new direction.

If you're Māori or Pacific, you can take advantage of free trades courses offered at Ara through **He Toki** and **Pacific Trades Training**. As well as gaining sought-after trades skills that can earn you good money, you'll also explore your cultural identity and be supported to join the next generation of Māori and Pacific trades leaders.



So long as you meet the government's eligibility criteria, you can study **fees-free** at Ara for up to a year. If you're studying for longer than a year, or if you don't qualify for fees-free study, be sure to check out our wide range of **Ara scholarships** - getting one could save you thousands of dollars in fees.



“

My decision to study opened up so many pathways that I could explore.

”

Olivia,
Administration and Technology

Time to sharpen your tools?

Professional development courses

Credit recognition

Adult literacy and numeracy courses

Ara Connect

Short courses

Te Ōhaka

If you're slogging it out in a job you don't really like, being overlooked for promotion, or feeling like you've been left behind by technology, now's the time to gain new skills that can open the door to exciting new opportunities.

As well as the more than 150 qualifications listed in this study guide, we also offer an extensive range of **professional development courses** that you can study while you work. If you're working, your employer might support you to do one of these courses, and may even pay your fees. Our professional development courses range from cookery, conflict management, customer service and beginner Te Reo, through to health and safety and effective communication.

We've also got lots of part-time, **short courses** that are great if you want to improve your work skills, pursue a passion or discover a new interest. You can learn about food safety or how to make your own furniture, get an introduction to welding, become an expert barista and lots more.

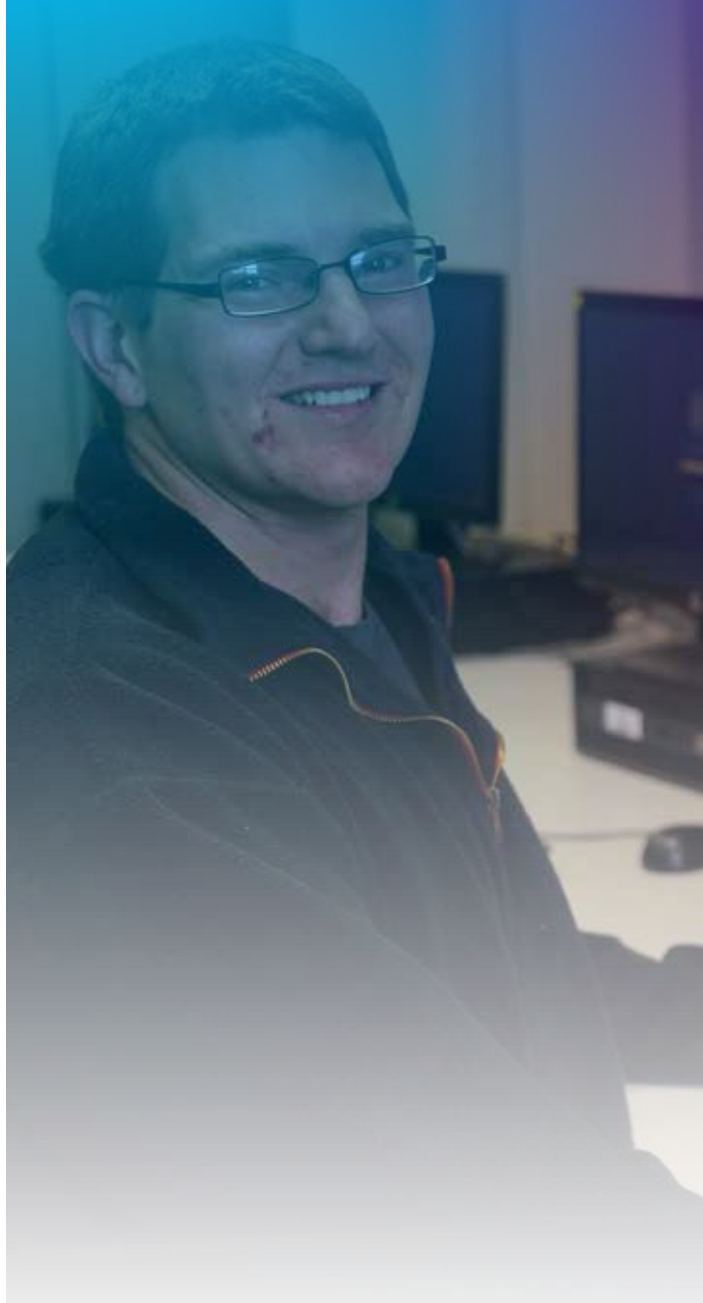


Are you one of the legions of hard workers out there with extensive workplace experience but no qualification to show for it? At Ara's Centre for Assessment of Prior Learning, you can get **credit recognition** for your experience which you can then put towards a formal qualification like a certificate, diploma or degree. This confidence-boosting process can improve both your career opportunities and your earning potential.

If it's the basics that are holding you back, we have free **adult literacy and numeracy courses** to improve your reading, writing and maths for work and everyday life. We can also help you become confident in the digital world with free courses in common computer programmes like Word, Excel, PowerPoint, email and the internet. These courses are available through our **Ara Connect** network of community hubs (in Christchurch and Timaru) and you can study at your own pace.



Got a great idea for a new business or product, but not sure how to get it off the ground? **Te Ohaka** is a partnership between Ara and the Ministry of Awesome. Established to foster growth and innovation, Te Ohaka can provide you with free entrepreneurial support, mentorship and resources to help give your idea the best chance of success.



“

I wish I'd taken courses like these two decades ago.

”

Thomas,
Computing Basics

Choosing a subject to study

Explore your study options by identifying the areas that best match your interests and personality.

You're a creative thinker with the ability to innovate, engage and inspire.

Check out our courses in:

- Architectural studies
- Art and design
- Business
- Broadcasting and media
- Digital technologies
- Performing arts/music arts

You like to be at the cutting edge of technology and you work well with systems.

Check out our courses in:

- Digital technologies
- Engineering
- Laboratory science

You're interested in personal development through language, culture and knowledge.

Check out our courses in:

- Early childhood education
- English language
- Māori language
- Pacific language and culture
- Sustainability and outdoor education
- Teacher education

You're interested in understanding how things work, solving problems and nurturing plants and animals.

Check out our courses in:

- Agribusiness
- Animal science
- Laboratory science
- Sustainability

You're interested in the health and wellbeing of others and you're empathetic by nature.

Check out our courses in:

- Animal science
- Early childhood education
- Human services
- Medical imaging
- Midwifery
- Nursing
- Osteopathy
- Sport, nutrition and health promotion
- Teacher education

You're customer-focused with a desire to deliver great products, services and experiences.

Check out our courses in:

- Business
- Cookery and bakery
- Hair and beauty
- Hospitality
- Travel and tourism
- Massage therapy

You're highly motivated and organised and you have a strong analytical ability.

Check out our courses in:

- Business
- Digital technologies

You're interested in solving problems in practical ways and changing the way we live.

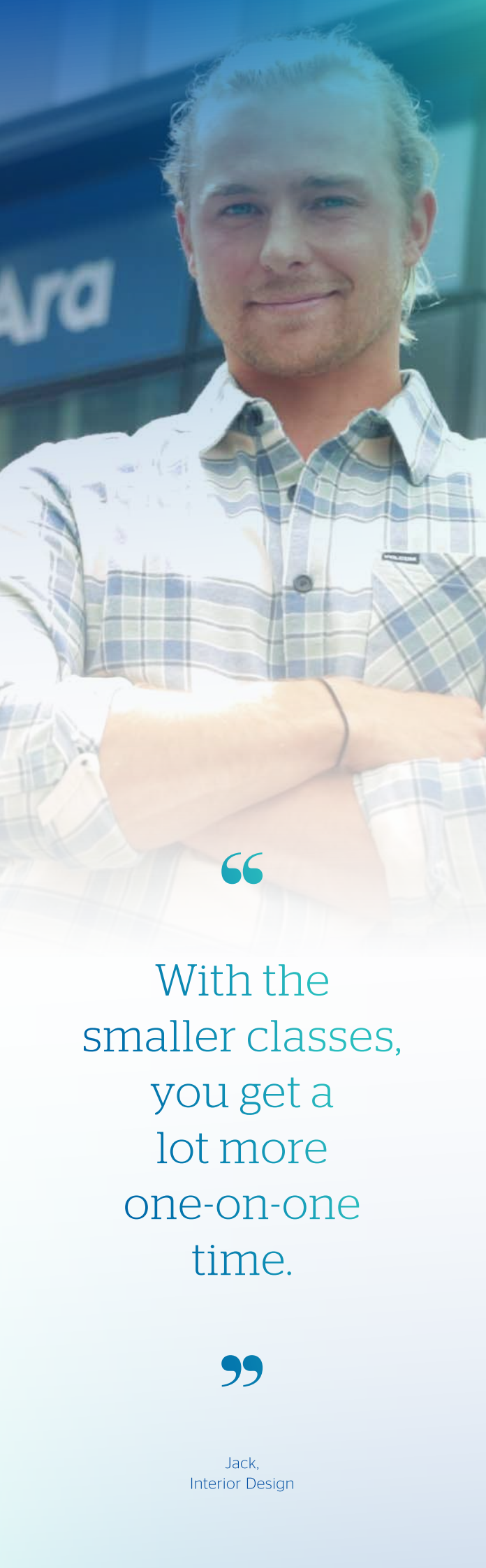
Check out our courses in:

- Architectural studies
- Business
- Engineering
- Laboratory science
- Sport, nutrition and health promotion

You're very practical, you enjoy hands-on work and you can solve problems in a logical way.

Check out our courses in:

- Engineering
- Laboratory science
- Trades



“

With the smaller classes, you get a lot more one-on-one time.

”

Jack,
Interior Design

Levels of study at Ara

At Ara, our focus is on flexible study options. That's why we've created various ways for you to gain qualifications and advance your training. There are a variety of levels for you to study, depending on where you want your career to lead you. You might start at an entry level foundation course, or launch straight into a degree.

LEVEL	
	<p>EXPERIENCE ARA Free junior and senior taster days, short NCEA credit courses (STAR), holiday workshops and information sessions.</p>
	<p>FOUNDATION/BRIDGING COURSES Courses for those who need to meet the entry criteria for higher level study. Open entry (no academic entry criteria)</p>
1 - 3	<p>DUAL ENROLMENT COURSES Part-time, NCEA credit-earning courses for students still at high school. Entry criteria: Open entry for Year 11-13 students.</p>
1 - 4	<p>CERTIFICATES: 40-120 CREDITS Entry criteria: Open entry or specified credits from a tertiary qualification at Levels 1-3, or specified NCEA credits, or equivalent.</p>
5 - 6	<p>DIPLOMAS: 120-240 CREDITS Entry criteria: Specified credits from a tertiary qualification at Levels 1-4, or specified NCEA credits, or equivalent.</p>
7	<p>BACHELOR DEGREES: 360-480 CREDITS Entry criteria: Specified credits from a tertiary qualification at Levels 3-4, or specified NCEA credits at Levels 1-3, or equivalent.</p>
7	<p>GRADUATE DIPLOMAS AND CERTIFICATES: 60-120 CREDITS Entry criteria: Academic entry. Degree graduates or relevant industry experience.</p>
8	<p>POSTGRADUATE DIPLOMAS AND CERTIFICATES: 60-120 CREDITS Entry criteria: Academic entry. Degree graduates or relevant industry experience.</p>
9	<p>MASTERS: 180-240 CREDITS Entry criteria: Academic entry. Degree graduates or relevant industry experience.</p>



Te Hoe Hōkai Pakihi

Business & Digital Technologies

Tony
Ara graduate

Business



Studying business at Ara can provide you with the tools to manage your career in a world of constant change. Our small and interactive classes allow us to treat you as an individual and will help you to develop both the technical and soft skills for success. We offer study pathways that develop generalist business knowledge and allow for specialisation within a business discipline. Our focus on work-integrated learning provides opportunities for you to develop your business skills in real-world contexts.

Potential careers: Entrepreneur, change manager, project manager, corporate finance manager, accountant or chartered accountant, business owner, event manager, executive assistant, financial advisor, hotel manager, HR manager, marketing specialist, office administrator, operations manager, restaurant manager, sales representative, agribusiness manager.

QUALIFICATION	LEVEL	FULL-TIME	PART-TIME	LOCATION	STARTS	
DE New Zealand Certificate in Business (Administration and Technology)	3	6 months		Chch/Online	Feb/Jul	
New Zealand Certificate in Business (Introduction to Small Business)		×		Online	All year	
New Zealand Certificate in Business (Introduction to Team Leadership)						
New Zealand Certificate in Business (Administration and Technology)	4	6 months		Chch/Online	Jul	
New Zealand Certificate in Business (Small Business)				Online	All year	
New Zealand Certificate in Business (Accounting Support Services)						
New Zealand Certificate in Business (First Line Management)						
New Zealand Certificate in Project Management						
New Zealand Certificate in Study and Career Preparation				Christchurch		
New Zealand Diploma in Primary Industries Business Management	5	×		Canterbury, Tasman, Marlborough, West Coast, Otago, Southland, Online		
New Zealand Diploma in Business (with specialisations in: Accounting; Administration and Technology; Human Resource Management; Leadership and Management; Marketing and Sales; and Project Management)	5	1 year	✓	Chch/Tim/Ash/Online		
Bachelor of Accounting	7	3 years		Christchurch	Feb/Jul	
Bachelor of Applied Management (with specialisations in: Business Information Systems; Business Transformation and Change; Event Management; Human Resource Management; Innovation and Entrepreneurship; Operations and Production Management; Project Management; Marketing and Sales; Strategic Management; and Supply Chain Logistics)						
Graduate Diploma in Business (with specialisations in: Accounting; Applied Management; Business Information Systems; Business Transformation and Change; Human Resource Management; Innovation and Entrepreneurship; Operations and Production Management; Project Management; Marketing and Sales; Strategic Management; and Supply Chain Logistics)		1 year				
Graduate Certificate in Business Management		6 months				
Postgraduate Certificate in Professional Supervision	8	6 months				Feb
Master of Sustainable Practice	9	1.5 years				Feb/Jul

Digital Technologies



The ever-changing and exciting global tech industry is always looking to employ people with the ability to use technology to innovate and solve problems to be part of this exciting sector. We offer pathways from Level 2 right through to Level 7 degrees and graduate diplomas. You can cross-credit between courses and you can specialise in a particular area of information technology. We place a strong emphasis on developing your practical abilities and - depending on the level of your study - you'll have the opportunity to acquire real-world experience through a significant industry-based project or internship.

Potential careers: App developer, business analyst, computer programmer, cybersecurity, database administrator/developer, interactive media developer, IT support/helpdesk, network infrastructure technician, network systems/server administrator, software engineer, software tester, web developer.

QUALIFICATION	LEVEL	FULL-TIME	PART-TIME	LOCATION	STARTS
New Zealand Certificate in Computing (Intermediate User)	3	6 months		Chch/Tim	Various
New Zealand Certificate in Study and Career Preparation	4			Christchurch	
HT PT New Zealand Certificate in Information Technology Essentials	4	1 year		Chch/Tim	Feb/Jul
HT PT New Zealand Diploma in Information Technology Technical Support	5				
New Zealand Diploma in Web Development and Design	5				
New Zealand Diploma in Cybersecurity	6				
New Zealand Diploma in Systems Administration	6				
Bachelor of Information and Communication Technologies (with specialisations in: Software Development, Network Engineering, Information Systems, and Cybersecurity)	7	3 years		Christchurch	
Graduate Diploma in Information and Communication Technologies (with specialisations in: Front-end Programming, Information Systems, Networking, and Cybersecurity)		1 year			



“

The quality
of the
tutors was
amazing.

”

Anita,
Ara graduate

Anita came to New Zealand with a law degree from a university in Italy. She wanted to broaden her career opportunities so she studied the Graduate Diploma in Human Resource Management at Ara. This helped her land a job as an HR consultant at EQ Consultants in Christchurch.



Te Hoe Toi
**Creative
Industries**

Pita
*Studied a New Zealand
Certificate in Creativity*

Art & Design



Our art and design courses are highly practical and focus on skills-based learning to give you all the skills you need to be creative and effective in this competitive industry. You'll learn from expert tutors in small classes, in our well-equipped studios and Mac computers suites. Study in art and design represents the beginning of a lifetime of growth and learning as graduates pursue careers in a swiftly evolving environment. This will inevitably reshape thinking of what is possible in the creative work context. Our graduates will be at the forefront of these shifts, leading the drive to ensure innovation and creativity continues to flourish in an increasingly digitally connected world.

Potential careers: Advertising creative, content editor, fashion buyer, fashion designer, illustrator, film or TV animator, graphic designer, information designer, jeweller, model-maker, merchandiser, web designer, concept artist, patternmaker, printmaker.

QUALIFICATION	LEVEL	FULL-TIME	PART-TIME	LOCATION	STARTS
New Zealand Certificate in Creativity	4	6 months	✓	Chch/Tim	Jul
New Zealand Certificate in Digital Media and Design					Jul
New Zealand Certificate in Fashion				Christchurch	Feb
New Zealand Diploma in Arts and Design	5	1 year	✗	Chch/Tim	Feb
New Zealand Diploma in Digital Media and Design					
Bachelor of Design (with specialisations in: Applied Visual Art; Fashion Technology and Design; Motion Design; and Visual Communication Design)	7	3 years		Christchurch	
Postgraduate Diploma in Creative Practice	8	1 year	✗	Christchurch	Feb
Master of Creative Practice	9	1.5 years			

Broadcasting & Media



The New Zealand Broadcasting School at Ara is recognised as one of the best places to train for a career in the highly competitive media industry. Tutored by broadcasting professionals within state-of-the-art facilities, our graduates are highly sought after, both here and overseas.

Potential careers: Journalist, camera operator, radio presenter, online editor, production manager, copy writer, video editor, studio engineer, show producer, media promotions manager, videographer, sports reporter/producer.

QUALIFICATION	LEVEL	FULL-TIME	PART-TIME	LOCATION	STARTS
Bachelor of Broadcasting Communications (Journalism)	7	3 years	✗	Christchurch	Feb
Bachelor of Broadcasting Communications (Screen Production)					
Bachelor of Broadcasting Communications (Radio)					

Music & Music Theatre



If music is your passion, then learn how to perform, write and produce from our internationally renowned teachers and get the skills and experience you need for a career in the global music industry. If you prefer to tread the boards in music theatre, then a programme at the National Academy of Singing and Dramatic Art (NASDA) is for you. Our programmes will prepare you for the world stage, in a practical, friendly and supportive environment, led by a faculty of leading industry professionals.

Potential careers: Actor, arranger/composer, dancer, drama teacher, music teacher, music theatre performer, musician, presenter, singer, songwriter, theatre maker.

QUALIFICATION	LEVEL	FULL-TIME	PART-TIME	LOCATION	STARTS
New Zealand Certificate in Music	4	1 year	✗	Christchurch	Feb
New Zealand Certificate in Performing Arts					
Bachelor of Music (with pathways in: Music Creation, Music Performance, and Music Production)	7	3 years	✓		
Bachelor of Music Theatre			✗		



“

My
internship
opened
the right
doors for
me.

”

Megan,
Ara graduate

Megan graduated with a Bachelor of Broadcasting Communications (Radio) from the New Zealand Broadcasting School at Ara. She's enjoyed considerable success in commercial radio and currently co-hosts The Edge's breakfast show.



Ara Pūhanga & Hoahoanga

Engineering & Architecture

Joshua
Ara graduate

Engineering



Engineering involves solving problems and challenges through the application of scientific knowledge. It's a hugely diverse and dynamic area with exciting opportunities to invent, collaborate and make a difference - potentially on a global scale.

At Ara, we focus on practical and applied engineering with the aim of preparing you for a diverse spectrum of employment opportunities, both in New Zealand and overseas. An Ara engineering qualification gives employers a clear signal that you have the skills, knowledge and practical experience needed to be effective in the workplace from day one.

Potential careers: Civil engineer, mechanical engineer, structural engineer, electrical engineer, site engineer, project engineer, transportation engineer, instrumentation and control engineer, process engineer, geotechnical engineer, software/hardware engineer, civil technician, structural technician, mechanical technician, electrical technician.

QUALIFICATION	LEVEL	FULL-TIME	PART-TIME	LOCATION	STARTS
New Zealand Certificate in Study and Career Preparation	3	6 months		Christchurch	Feb/Jul*
New Zealand Certificate in Study and Career Preparation	4				
New Zealand Diploma in Engineering (with specialisations in: Civil; Electrical*; Electronics*; and Mechanical)	6	2 years	✓	Christchurch	Feb/Jul*
Bachelor of Engineering Technology (with specialisations in: Civil; Electrical*; and Mechanical)	7	3 years			
Master of Sustainable Practice	9	1.5 years			

*Electrical specialisation February intake only

Architectural Studies



Whether you choose to study architectural technology, interior design, construction management or quantity surveying, our team of design and architectural professionals can equip you with the skills and knowledge you need to succeed in these fields. You'll learn about the variety of solutions that can be applied to design challenges, and how excellent visual, oral and written communication can be used to help smooth a project's way.

Potential careers: Architectural/CAD technician, architectural designer, consultant, furniture designer, interior designer, 3D architectural modeller, quantity surveyor, estimator, construction manager, and building information modeling manager.

QUALIFICATION	LEVEL	FULL-TIME	PART-TIME	LOCATION	STARTS
New Zealand Certificate in Study and Career Preparation	3	6 months		Christchurch	Feb/Jul
New Zealand Certificate in Study and Career Preparation	4				
New Zealand Diploma in Interior Design (Residential)	5	1 year	✓		Feb
New Zealand Diploma in Architectural Technology	6	2 years			Feb/Jul
New Zealand Diploma in Construction (with specialisations in: Construction Management; and Quantity Surveying)					
Bachelor of Architectural Studies	7	3 years	✗		Feb
Bachelor of Construction (with specialisations in: Construction Management; and Quantity Surveying)			Feb/Jul		
Graduate Certificate in Building Information Modeling		6 months	✓		Feb
Graduate Diploma in Building Information Modeling	1 year	Feb/Jul			
Graduate Diploma in Construction Management					
Graduate Diploma in Quantity Surveying	9	15 years			Feb/Jul
Master of Sustainable Practice					



“

The small
class sizes
suited me.

”

Richard,
Ara graduate

Richard studied mechanical engineering at Ara, combining part-time study with part-time work at Skope. His qualification has enabled him to fulfil his dream of becoming a mechanical design engineer for Skope, where he's worked for over a decade.



Ara Hauora Health

Millie
Ara graduate

Health Sector



When you choose to study a health-related subject at Ara, you'll learn in a supportive environment and be among the most sought-after health graduates in the country. During your course you'll form strong relationships with your tutors, who are each registered and currently in practice. Hands-on learning is our focus and this is supported by excellent facilities (such as clinical practice units, scrub bays, laboratories, SIM pads, mock home environments and programmable mannequins) and extensive work placement opportunities.

Potential careers: Enrolled nurse, registered nurse, midwife, radiographer, pregnancy and childbirth educator, osteopath.

QUALIFICATION	LEVEL	FULL-TIME	PART-TIME	LOCATION	STARTS	
New Zealand Certificate in Study and Career Preparation	3	6 months	✓	Chch/Tim	Feb	
New Zealand Certificate in Study and Career Preparation	4			Chch/Tim/Online	Feb/Jul	
New Zealand Diploma in Enrolled Nursing	5	15 years	✗	Chch - with satellites in Nelson, West Coast and South Canterbury	Mar	
New Zealand Diploma in Pregnancy, Childbirth and Early Parenting Education		✗	✓	Online	Feb	
Competency Assessment Programme - Enrolled Nurse		9 weeks	✗	Chch/Tim	Jan/Mar/ May/Jul/ Oct/Nov	
Competency Assessment Programme - Registered Nurse	7	3 years	✓	Christchurch	Feb/Jul	
Bachelor of Applied Science (with specialisation in: Health Promotion)				Chch/Tim*		
Bachelor of Nursing	7-9	2 years	✗	Christchurch	Feb	
Bachelor of Nursing with University of Canterbury Master of Health Sciences Professional Practice (Nursing)				Chch**	Jan	
Bachelor of Medical Imaging	7	3 years	✓	Chch - with satellites in Nelson, Marlborough, West Coast and Mid/South Canterbury		Feb
Bachelor of Midwifery				✗	Christchurch	
Bachelor of Musculoskeletal Health				✗		
Graduate Certificate in Nursing	8	1 year	✓	Christchurch	Feb/Aug	
Graduate Diploma in Nursing					Feb	
Postgraduate Certificate in Professional Supervision	8	6 months	✓	Online^	Jan/Jul	
Postgraduate Certificate in Health Practice						
Postgraduate Diploma in Health Practice						
Postgraduate Diploma in Osteopathy	9	1 year	✓	Christchurch	Feb	
Master of Health Practice						
Master of Health Science						
Master of Nursing						
Master of Sustainable Practice	9	2.5 years	✓	Online^	Jan/Jul	
Master of Nursing						
Master of Sustainable Practice	9	1.5 years	✓	Christchurch	Feb/Jul	
Master of Sustainable Practice						

*February intake only - Timaru

**Note: clinical placements are across New Zealand

^Some courses have a compulsory onsite component of 1-4 days

Human Services



Human services is a field which offers rewarding careers for individuals who are able to support the emotional needs of others. At Ara you'll be taught by a dedicated team of qualified professionals with extensive experience across a broad range of social work environments. Our qualifications are highly respected in the community, and include opportunities to gain real-world experience working with people who need specialised attention.

Potential careers: Community support worker, mental health and addiction support worker, social worker, youth worker.

QUALIFICATION	LEVEL	FULL-TIME	PART-TIME	LOCATION	STARTS	
New Zealand Certificate in Study and Career Preparation	3	6 months	✓	Christchurch	Feb/Jul	
New Zealand Certificate in Study and Career Preparation	4					
New Zealand Certificate in Health and Wellbeing (with specialisations in Community Facilitation, Mental Health and Addiction Support and Social Services)	4	1 year		Chch/Tim		
Principles of Family Violence Intervention Micro-credential G21189	7	12 weeks		Online*		Feb/Jul
Bachelor of Social Work	7	4 years		Christchurch		Feb
Postgraduate Certificate in Professional Supervision	8	6 months		Christchurch		Feb

*Online with two on-site days

Sport, Nutrition & Health Promotion



The rapidly expanding areas of sports science, nutrition and health promotion offer a wide range of exciting career opportunities. At Ara, you'll learn from experienced professionals in modern learning spaces with state-of-the-art equipment. Depending on the level of your qualification, you may also have the opportunity to undertake a significant industry project or work placement.

Potential careers: Sports scientist, nutritionist, health promoter, sports coach, strength and conditioning coach, fitness instructor, personal trainer, corporate health consultant.

QUALIFICATION	LEVEL	FULL-TIME	PART-TIME	LOCATION	STARTS
New Zealand Certificate in Study and Career Preparation	4	6 months	✓	Chch/Tim/Online	Feb/Jul
New Zealand Certificate in Exercise				Christchurch	
Bachelor of Applied Science (with specialisations in: Health Promotion; Sport and Exercise Science; and Human Nutrition)	7	3 years		Christchurch	



“

It gave me the confidence to do this.

”

Hannah,
Ara graduate

Hannah is a Bachelor of Nursing graduate currently working overseas as a registered nurse.



Ara Te Hoe Manaaki me kā Ratoka Ahumahi

Hospitality & Service Industries

Timothy
Ara graduate

Hospitality, Cookery, Bakery, Travel & Tourism



If you're a people-person with an excellent sense of customer service, you'll thrive in the fast-paced hospitality, travel and tourism sectors. Our courses are very practical and designed to equip you with the hands-on skills employers need. You'll learn from highly experienced tutors - many of whom continue to work in the industry - and graduate with excellent employment prospects.

Potential careers: Baker, barista, bartender, café chef, caterer, chef de partie, commis chef, concierge, food and beverage manager, front office receptionist, hotel supervisor/manager, pastry chef, porter, tourism and events manager, travel consultant, waiter.

QUALIFICATION	LEVEL	FULL-TIME	PART-TIME	LOCATION	STARTS
DE Hospitality Supported Learning	1	✗	✓	Christchurch	Feb
YG New Zealand Certificate in Tourism and New Zealand Certificate in Hospitality	2	8 months	✗		Mar
DE Hospitality, Cookery and Beverage		✗	✓	Chch/Oam	Feb
DE Cookery and Restaurant Service Skills	Jul				
DE Barista Hospitality Pathway (Blended Delivery)	Feb/Jul*				
New Zealand Certificate in Food and Beverage Service (Barista and Restaurant Service)	3	6 months	✗	Chch/Tim	Feb/Jul*
New Zealand Certificate in Food and Beverage Service (Restaurant Service) (Work Integrated Learning)		May			
DE Baking	✗	✓	Christchurch	Feb	
DE Cookery				Feb	
New Zealand Certificate in Tourism				Feb/Jul	
New Zealand Certificate in Tourism and Travel	3 & 4	1 year	Christchurch	Feb	
New Zealand Certificate in Travel	4	6 months		Jul	
New Zealand Certificate in Food and Beverage Service	3 & 4	1 year		✗	Feb
New Zealand Certificate in Food and Beverage Service (Advanced Restaurant Service)	4	6 months	Christchurch	Jul	
New Zealand Certificate in Baking		Feb			
New Zealand Certificate in Cookery	✗	1 year	Chch/Tim	Feb/Jul*	
New Zealand Certificate in Cookery (Managed Apprenticeship)		Feb/Jul			
New Zealand Diploma in Cookery (Advanced Cookery)	5	1 year	✗	Christchurch	Feb/Jul
New Zealand Diploma in Cookery (Advanced Patisserie)				Feb	
New Zealand Diploma in Hospitality Management	6	1 year	Christchurch	Feb/Jul	
New Zealand Diploma in Hospitality Management				Feb/Jul	
Bachelor of International Tourism and Hospitality Management	7	3 years	✓		Feb/Jul

*Christchurch only

Massage, Hair & Beauty



A career in massage, barbering, hairdressing or beauty therapy offers endless potential across many industries and can take you around the world. At Ara, you'll learn from industry professionals who will teach you both theory and practical skills in our modern salons and clinics. You'll also gain valuable experience by operating clinic and salon days with real clients. By the time you graduate you'll be industry-ready and highly capable with good problem-solving skills.

Potential careers: Barber, beautician, beauty therapist, cosmetics consultant, electrolysis technician, hairdresser, hair colourist, hair stylist, image consultant, make-up artist, massage therapist, nail technician, salon manager, skincare consultant, spa manager.

QUALIFICATION	LEVEL	FULL-TIME	PART-TIME	LOCATION	STARTS
DE Introduction to Beauty Therapy	2	x	✓	Chch/Tim	Feb
DE Introduction to Barbering				Christchurch	
DE Salon Skills					
YG New Zealand Certificate in Salon Skills (Introductory)	6 months	x		Jul	
DE Hairdressing and Beauty Therapy	3	x	✓	Timaru	Feb
New Zealand Certificate in Hairdressing (Salon Support)		1 year	x	Chch/Tim	
YG New Zealand Certificate in Hairdressing (Salon Support)				Christchurch	
New Zealand Certificate in Makeup and Skincare		6 months			
New Zealand Certificate in Beauty Therapy	4	1 year		x	Chch/Tim
New Zealand Certificate in Hairdressing (Emerging Stylist)					
New Zealand Certificate in Commercial Barbering					
New Zealand Diploma in Beauty Therapy	5	1 year	x	Christchurch	Feb
New Zealand Diploma in Wellness and Relaxation Massage	5				
New Zealand Diploma in Remedial Massage	6				



“

I can work
anywhere
in the
world.

”

Lauri,
Ara graduate

Lauri gained a triple diploma at Ara in hospitality, marketing and human resources. She worked overseas for six years before returning to Christchurch where she works in hospitality management while also tutoring at Ara.



Ara Reo, Ahurea & Ako

Language, Culture & Education

Tania
Ara graduate

Early Childhood Education



Early childhood education enables you to enjoy a rewarding career providing a valuable community service. Qualified professionals are in strong demand in New Zealand at all levels and our courses will prepare you well for a career or further study in this sector. Our industry connections ensure that your study leads to employment and career opportunities. In addition, work placements will give you an insight into the industry and allow you to demonstrate your strengths while making employment connections.

Potential careers: Childcare support worker, early childhood centre staff, ECE reliever, home-based carer, au pair, nanny, teacher aide.

QUALIFICATION	LEVEL	FULL-TIME	PART-TIME	LOCATION	STARTS
New Zealand Certificate in Early Childhood Education and Care	3	6 months	✗	Chch/Tim	Feb
New Zealand Certificate in Early Childhood Education and Care	4				Jul
New Zealand Diploma in Early Childhood Education and Care	5	1 year			Feb

Teacher Education



Brilliant educators have an aptitude for outstanding communication and a passion for working with and supporting others to achieve their goals. Our tutors all have recent experience of both teaching and teacher training. We can offer excellent facilities and resources, and valuable industry connections. Tertiary teaching qualifications need candidates to already be working with adult/tertiary learners.

Potential careers: Corporate trainer, curriculum planner, teacher of adult learners, tutor, teacher of English as a second language, workplace assessor.

QUALIFICATION	LEVEL	FULL-TIME	PART-TIME	LOCATION	STARTS
Workplace Assessment	4	✗	✓	Christchurch	Various
CELTA (Certificate in Teaching English to Speakers of Other Languages)	5			Chch/Online	
New Zealand Certificate in Adult and Tertiary Teaching				Christchurch	
New Zealand Certificate in Adult Literacy and Numeracy Education (Vocational/Workplace)	7			Chch/Online	
Graduate Diploma in Tertiary Learning and Teaching	8			Christchurch	
Postgraduate Certificate in Professional Supervision					

Māori/Pacific Language & Culture



Our Māori and Pacific language courses are designed to give you a distinct advantage in today's competitive employment market, and to enhance your ability to communicate within family and community environments. Our expert tutors are passionate about sharing their knowledge, skills and industry connections, and will work with you to discover your strengths and help you succeed in a stimulating and supportive whānau environment.

Potential careers: Teacher, translator, broadcaster, strategic advisor, Māori/Pacific researcher, tourism operator, health promoter, performer/composer, entrepreneur, community support worker, cultural advisor, marketing, governance.

QUALIFICATION	LEVEL	FULL-TIME	PART-TIME	LOCATION	STARTS
Beginners Te Reo Māori	2	✗	✓	Christchurch	Feb/Jul**
Elementary Te Reo Māori	3	6 months			
Advanced/Elementary Te Reo Māori	4				
Certificate in Samoan Language (Gagana Sāmoa)	5	✗	Chch/Online	Jul	
Master of Sustainable Practice	9	15 years		Feb/Jul	

*Part time Term 1 and 3 only

**July full time only

English Language



Ara is internationally recognised as one of the best English language training centres in New Zealand, with students from more than 30 countries choosing to study with us to improve their English speaking, listening, reading and writing. We offer a range of courses that will equip you with the professional language skills needed in the global marketplace. In addition to high quality tuition from our friendly, professional tutors, you'll have the opportunity to develop your skills on a daily basis by mixing with other English speaking students on campus.

Potential careers: English language skills will increase your opportunities for successful employment and higher education in New Zealand and internationally.

QUALIFICATION	LEVEL	FULL-TIME	PART-TIME	LOCATION	STARTS
New Zealand Certificate in English Language	1-3	6 months	✓	Chch/Tim	Feb/Jul*
New Zealand Certificate in English Language	4		✗		
English Language Training	4	4 weeks*			
New Zealand Certificate in English Language (Academic)	5	6 months		Christchurch	Feb/Jul

*Available part-time/four weeks minimum

*Part time starts February only

Supported Learning



Supported Learning caters for students with intellectual/learning disabilities. It's designed to equip students with skills, knowledge and confidence they need to be productive citizens of Aotearoa and advance their life and work goals.

Potential careers: Entry level positions in structured setting can include: kitchenhand, café worker, supermarket assistant, warehouse worker, aged care assistant, nursery worker.

QUALIFICATION	LEVEL	FULL-TIME	PART-TIME	LOCATION	STARTS
New Zealand Certificate in Skills for Living for Supported Learners	1	1 year	✘	Christchurch	Feb
Skills for Working for Supported Learners		6 months			Jul
New Zealand Certificate in Foundation Skills					

Please note: part-time non assessed short courses for supported learners are also offered. Please enquire for more information.

Foundation Skills



Foundation Skills will provide you with the opportunity and tools to make positive changes in your life and explore pathways and options for your future. Our highly skilled tutors will identify your individual learning style and empower you to build on this.

Potential careers: Foundation Skills provides a pathway into higher education in your chosen field. It also builds your confidence for re-entering the workforce and increases your opportunities for gaining entry-level employment in your chosen industry.

QUALIFICATION	LEVEL	FULL-TIME	PART-TIME	LOCATION	STARTS
New Zealand Certificate in Foundation Skills (Career and Education)	2	6 months	✘	Christchurch	Various

Sustainability & Outdoor Education



Our sustainability and outdoor education courses are unique in Australasia due to their focus on sustainability. With a 50/50 split between theory and practical, much of your learning will take place out and about in the Canterbury region. You'll learn from highly qualified and experienced tutors who are passionate about equipping you with the skills and knowledge you need to lead and inspire others.

Potential careers: Outdoor instructor, adventure or eco-tourism guide, conservation worker, environmental educator, sustainability advisor, teacher.

QUALIFICATION	LEVEL	FULL-TIME	PART-TIME	LOCATION	STARTS
DE Sustainability and Outdoor Education	3	✗	✓	Christchurch	Feb
New Zealand Certificate in Outdoor and Adventure Education (Multi-skilled)	4	1 year			Feb/Jul
New Zealand Diploma in Outdoor and Adventure Education (Multi-skilled)	5				
Bachelor of Sustainability and Outdoor Education	7	3 years			
Graduate Diploma in Sustainability and Outdoor Education		1 year			
Postgraduate Certificate in Sustainable Practice	8	6 months		Chch/Online	Feb
Postgraduate Diploma in Sustainable Practice		1 year			Feb/Jul
Master of Sustainable Practice		9			



“

It's a
different
way of
learning
and it's
great!

”

Arthur,
Ara graduate

Originally from Brazil, Arthur graduated from Ara with a Graduate Diploma of Sustainability and Outdoor Education. As an executive producer for Resonate, an environmentally conscious film company with a strong outdoor focus, he uses the skills he learned at Ara every day.



Ara Pūtaiao **Science**

Tegan
Ara graduate



“

I got straight into workplace training.

”

Marysha,
Ara graduate

Marysha is a graduate of the New Zealand Diploma in Veterinary Nursing at Ara. She now works as a registered vet nurse.

Animal Science



If you have a compassionate attitude and you can relate to people who love animals, you'll thrive studying one of our animal science courses. You'll gain extensive practical experience thanks to our excellent facilities on campus and the relationships our tutors have fostered within the industry.

Potential careers: Veterinary nurse, animal breeder, animal nutritionist, kennel or cattery manager, research technician, zoo or wildlife park worker.

Please note: all animal science programmes at Ara are currently under review and therefore subject to change. Please contact the department for the latest information.

QUALIFICATION	LEVEL	FULL-TIME	PART-TIME	LOCATION	STARTS
New Zealand Certificate in Study and Career Preparation	3	6 months	✓	Christchurch	Feb/Jul
New Zealand Certificate in Animal Management (Companion Animal)	4	1 year	✗		Feb
New Zealand Certificate in Animal Technology (Veterinary Nursing Assistant)	5				
New Zealand Diploma in Veterinary Nursing	6				

Science



The science industry is constantly developing and expanding, resulting in a wide range of exciting career opportunities. Within Ara's state-of-the-art facilities you'll learn from expert tutors with extensive industry and research experience. All our applied science courses are highly practical. Depending on the course you study, you may also have the opportunity to undertake a substantial work placement or industry project.

Potential careers: Environmental monitoring, food microbiologist, laboratory technician, researcher, data analyst, industrial product testing.

QUALIFICATION	LEVEL	FULL-TIME	PART-TIME	LOCATION	STARTS
New Zealand Certificate in Study and Career Preparation	4	6 months	✓	Chch/Tim/Online	Feb/Jul
New Zealand Diploma in Applied Science	5	1 year		Christchurch	
New Zealand Diploma in Applied Science	6				
Graduate Diploma in Laboratory Technology	7				

Sport, Nutrition & Health Promotion



The rapidly expanding areas of sports science, nutrition and health promotion offer a wide range of exciting career opportunities. At Ara, you'll learn from experienced professionals in modern learning spaces with state-of-the-art equipment. Depending on the level of your qualification, you may also have the opportunity to undertake a significant industry project or work placement.

Potential careers: Sports scientist, nutritionist, health promoter, sports coach, strength and conditioning coach, fitness instructor, personal trainer, corporate health consultant.

QUALIFICATION	LEVEL	FULL-TIME	PART-TIME	LOCATION	STARTS
New Zealand Certificate in Study and Career Preparation	4	6 months	✓	Chch/Tim/Online	Feb/Jul
New Zealand Certificate in Exercise				Christchurch	
Bachelor of Applied Science (with specialisations in: Health Promotion; Sport and Exercise Science; and Human Nutrition)	7	3 years			



Ara-ā-rehe
Trades

Automotive Trades



If cars, trucks and vehicles are your thing and you have your sights set firmly on a career in the automotive industry, our range of automotive programmes will prepare you for that goal. Your chosen programme will give you a comprehensive understanding of how vehicles work and equip you with the skills and knowledge needed to fix them and fine tune them when they don't.

Potential careers: Automotive apprentice, automotive retail, collision repairer, refinisher, automotive engineer - light, heavy vehicle, electrical, workshop foreman, service advisor.

QUALIFICATION	LEVEL	FULL-TIME	PART-TIME	LOCATION	STARTS
DE Introduction to Agricultural Automotive and Engineering	2	✗	✓	Timaru	Feb
DE Introduction to Automotive One Day				Chch/Tim	
DE Introduction to Automotive and Engineering Two Day				Christchurch	
YG New Zealand Certificate in Foundation Skills (Introduction to Automotive and Engineering)	3	6 months	✗	Chch/Tim*	Feb/Jul
HT PT New Zealand Certificate in Collision Repair and Automotive Refinishing**				Christchurch	Jan/Jul
HT PT New Zealand Certificate in Automotive Engineering**				Chch/Tim	
HT PT New Zealand Certificate in Light Automotive Engineering Apprenticeship	4	✗	✓	Christchurch	All year

*July intake only - Timaru **Full-time and part-time, 18 months (Christchurch only)

Engineering Trades



From small precision engineered tooling through to massive steel structures, there's a huge range of career options open to you when you choose an engineering trades pathway. New Zealand engineers are renowned for being resourceful, highly capable and creative in the manufacturing of engineered products. At Ara you'll learn the skills and knowledge required to use a range of hand tools, machinery and equipment in a modern engineering workshop environment.

Potential careers: Fabrication (light/heavy), steel construction, mechanical engineering, fitting and machining, maintenance engineer, toolmaking, welder.

QUALIFICATION	LEVEL	FULL-TIME	PART-TIME	LOCATION	STARTS
DE Introduction to Agriculture Automotive and Engineering	2	✗	✓	Timaru	Feb
DE Introduction to Automotive and Engineering Two Day				Christchurch	
DE Introduction to Engineering One Day					
HT PT New Zealand Certificate in Mechanical Engineering	3	1 year	✗	Chch/Tim*	Feb/Mar/ Aug
New Zealand Certificate in Mechanical Engineering Apprenticeship	4	✗	✓	Chch/Tim	All year
New Zealand Certificate in Engineering Fabrication Apprenticeship					

*February intake only - Timaru

Building & Carpentry



When you work in the construction industry, your carpentry and building skills literally shape our landscape. As with any construction project you'll start with the foundations by learning the basics - hand tools, equipment, machinery, techniques and safety - before progressing on to more complex construction processes. When you study building and carpentry at Ara you'll build yourself a career that offers variety and opportunity across residential and commercial build or renovation projects, both indoors and out.

Potential careers: Builder, carpenter, construction site supervisor, leading hand, brick or block layer, stonemason, tiler, quantity surveyor, construction manager, estimator, building - residential/commercial structures.

QUALIFICATION	LEVEL	FULL-TIME	PART-TIME	LOCATION	STARTS
DE Introduction to Construction Trades One Day	2	x	✓	Chch/Tim	Feb
DE Introduction to Construction Trades Two Day				Christchurch	
YG New Zealand Certificate in Foundation Skills (Construction)				6 months	x
DE New Zealand Certificate in Construction Trade Skills (Carpentry)	3	x	✓	Christchurch	Feb
YG New Zealand Certificate in Construction Trade Skills (Carpentry)				Chch/Tim	
HT PT New Zealand Certificate in Construction Trade Skills (Carpentry)				1 year	x
New Zealand Certificate in Carpentry Apprenticeship	4	x	✓	Chch/Tim	All year

*February intake only - Timaru



Electrical



If electricity sparks your interest, there are a raft of career opportunities ready for you to connect to. From the source of power generation through to the multiple end uses of the electrical network, there are numerous pathways you can take towards a successful and varied career. Our electrical programmes will provide you with a broad range of electrical knowledge and skills in preparation for a rewarding career in the electrical industry.

Potential careers: Cable joiner, domestic electrician, electrical supply technician, industrial electrician, line mechanic, electrical fitter, telecommunications technician, electronic security.

QUALIFICATION	LEVEL	FULL-TIME	PART-TIME	LOCATION	STARTS
DE Introduction to Electrical Engineering	2	×	✓	Christchurch	Feb
YG New Zealand Certificate in Foundation Skills (Electrical Engineering)		6 months			Jan/Jul
HT PT New Zealand Certificate in Electrical Engineering (Theory)	3	1 year	×	Chch/Tim	Jan/Feb/ Aug/Sep*
New Zealand Certificate in Electrical Engineering (Theory)	4	3 years			Jan/Jul**

*January - Christchurch and Timaru. February/August/September - Christchurch only

**July intake only - Christchurch

Joinery



Nothing beats the smell and feel of freshly worked timber. If you have an eye for detail, a love of working with timber and the desire to work with the tools and machinery that help shape it into cabinetry, doors, windows, stairs, furniture and other wooden products, you're already on your way to becoming a skilled craftsman in the joinery trade. At Ara you'll begin by learning the basics - reading plans, using hand tools and using machinery - then progress towards more complex projects as your skill levels increase.

Potential careers: Joiner, cabinet maker, furniture maker, boat builder.

QUALIFICATION	LEVEL	FULL-TIME	PART-TIME	LOCATION	STARTS
HT PT New Zealand Certificate in Construction Trade Skills (Joinery)	3	9 months	×	Christchurch	Feb/Jul
New Zealand Certificate in Joinery Apprenticeship (with options in: Timber Doors and Windows; Timber Stairs and Laminate Fabrication; and Cabinetry)	4	×	✓		All year

Painting & Decorating



Make your mark on the world and bring colour into our lives. Our painting and decorating programmes will prepare you to find employment in this busy industry by taking you through industrial safety requirements, scaffolding, surface preparation and application techniques. From day one you'll be immersed in a hands-on programme that includes community-based painting and decorating projects.

Potential careers: Painter and decorator.

QUALIFICATION	LEVEL	FULL-TIME	PART-TIME	LOCATION	STARTS
New Zealand Certificate in Construction Trade Skills (Painting and Decorating)	3	6 months	✗	Chch/Tim	Feb/Jul*

*February intake only - Timaru

Plumbing, Gasfitting & Drainlaying



Our programmes in this area will prepare you for employment in one of the many professional teams that keep our taps running, our drains draining and our gas appliances working effectively and safely. You'll develop a wide range of skills in a team environment that will enable you to plan, build, install, fix and maintain these vital services using the tools and equipment of the trade.

Potential careers: Plumber, gasfitter, drainlayer, self-employed tradesperson, building inspector, tutor, plumbing equipment salesperson, technical advisor, project manager.

QUALIFICATION	LEVEL	FULL-TIME	PART-TIME	LOCATION	STARTS
DE Introduction to Plumbing Two Day	2	✗	✓	Christchurch	Feb
HT PT New Zealand Certificate in Plumbing, Gasfitting and Drainlaying (Pre Apprenticeship)	3	6 months	✗		Jan/May/ Jun/Oct
New Zealand Certificate in Plumbing & Drainlaying (Apprenticeship)	4	✗	✓		Feb
New Zealand Certificate in Gasfitting (Apprenticeship)					



“

I can train
while
I work.

”

Ivan,
Ara graduate

Ivan got his start in carpentry through the He Toki Māori Trades Training scheme. He's now undertaking an apprenticeship with Hawkins Construction and is on his way to becoming a qualified carpenter.

The free programmes offered through He Toki Trades Training and Pacific Trades Training are designed to equip Māori and Pacific people with valuable trade skills and help them towards becoming the next generation of trades leaders.

Locations & contact details

Website ara.ac.nz

Email info@ara.ac.nz

Phone 0800 24 24 76 (Mon-Thu, 8am-5pm | Fri, 9am-4.30pm)

City campus

Madras St, Christchurch

Admission & Enrolments, Rakaia Centre, Madras Street

Mon-Thu, 8am-5pm | Fri, 9am-4.30pm

Manawa campus

276 Antigua Street, Christchurch

Mon-Fri, 8.30am-4.30pm

Woolston campus

Ensors Road, Christchurch

Mon-Thu, 8am-5pm | Fri, 9am-4.30pm

Timaru campus

32 Arthur Street, Timaru

Mon-Thu 8am-5pm | Fri 8am-4.30pm

Ashburton campus

37 Alford Forest Road, Ashburton

Mon-Fri, 8am-4.30pm

Oamaru campus

44 Humber Street, Oamaru

Mon-Fri, 9am-3pm

City Ara Connect

City campus, Madras Street, Christchurch

Papanui Ara Connect

Papanui High School, 30 Langdons Road, Christchurch

Rangiora Ara Connect

Rangiora High School, 125 East Belt, Rangiora

Timaru Ara Connect

Timaru Campus, 32 Arthur Street, Timaru

Woolston Ara Connect

Woolston Campus, Ensors Road, Christchurch

How to apply

Applying online

If you know which course you want to study, go to that course's page on our website and look for the 'Apply Now' button. This will open a form specifically for that course. You can save as you go and return to it later. When you finish, simply click 'Submit' and we'll start processing your application.

Applying using a hard copy application form

Printed application forms are available at all Ara campuses.

Alternatively, you can download a PDF to print at ara.ac.nz/study-options/how-to-apply. Once you've completed your application form, drop it in to your nearest Ara campus, or mail it to:

Ara Enrolment Centre

PO Box 540

Christchurch Mail Centre

Christchurch 8140

New Zealand

If you have any questions about the application process, call us on **0800 24 24 76**

Open days

To explore study options, meet tutors and check out our campus facilities, come along to one of our open days, held in January and June each year. See the website for dates, times and locations.

Campus tours

A guided campus tour is a great way to see Ara in action and get a feel for what it's like to study with us. To request a tour, go to ara.ac.nz/book-a-tour.

Notes



From school leaver to TV journalist

Just a few short years after leaving high school and his hometown of Te Puke, Isaac Gunson (Ngāti Porou, Ngāpuhi) is reporting the news for TVNZ Breakfast.

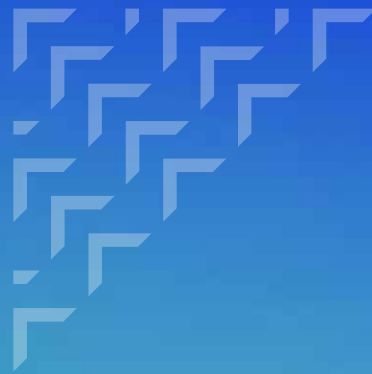
“ It’s a real honour to be able to do what I love „



Motherhood no barrier to study

Sharon Pendleton is living proof that the demands of raising children needn't prevent you from getting ahead through study.

“ Completing my degree in 12 months was immensely rewarding ”



Want to find out more?

For details of all courses, including full entry criteria and how to apply, visit ara.ac.nz

Get in touch if you have any questions: **0800 24 24 76 | info@ara.ac.nz**