

2026

# Programme Handbook

Salon Skills and Hairdressing Certificates (Level 2 - 4)



# Rāraki Upoko – Contents

<b>Nau mai ki Ara - Welcome to Ara</b> .....	<b>4</b>
<b>Tō Rangi Tuatahi - Orientation &amp; Your First Day</b> .....	<b>5</b>
Your First Day 2026 .....	5
First Day Information.....	6
Logins.....	6
Timetable information.....	6
How to find your way around .....	6
<b>Korero Nui - Important Information</b> .....	<b>8</b>
Learner Information Handbook .....	8
Health and Safety.....	8
Attendance.....	9
Non-Engagement .....	9
Drugs and Alcohol.....	10
Artificial Intelligence (AI) Tools .....	10
<b>Kā Raki whakahirahira - Important dates</b> .....	<b>11</b>
<b>Kā whakapātaka - Contact Details</b> .....	<b>12</b>
<b>Taipitopito akoraka - Programme Details</b> .....	<b>15</b>
NZ2201 – New Zealand Certificate in Salon Skills (Introductory) .....	15
NZ2411 – New Zealand Certificate in Hairdressing (Salon Support) (Level 3).....	16
NZ2413 – New Zealand Certificate in Hairdressing (Professional Stylist) (Level 4).....	18
<b>Kā tika me kā kaweka o te tauira - Learner Responsibilities and Rights</b> .....	<b>21</b>
<b>Kā Taunakitaka Mōu – Support for You</b> .....	<b>25</b>
Quick Reference–Where to Find Help If You Have Feedback or Want to Raise an Issue .....	25
<b>Kā Aromatawai - Assessments</b> .....	<b>27</b>
Academic Integrity .....	27
Submitting Your Work .....	28
The Grade Scale.....	30
<b>Kā tikaka aromatawai - Assessment Regulations</b> .....	<b>33</b>
Regulations Flowchart .....	33
Which form do I use? .....	33
Extensions.....	35



Late Submissions .....	35
Resits or resubmission of assessment tasks.....	35
Second Results (course level).....	35
Assessment in Te Reo Māori.....	35
Marks Carried Forward.....	36
Supported Assessment.....	36
Recognising Prior Knowledge and Skills .....	36
Alternative Arrangements .....	36
Aegrotat.....	37
Reconsideration of Assessment Decisions .....	37
Reconsideration of a Course Final Grade .....	37
Appeal of Reconsideration Decision .....	37
Conceded Pass .....	38
<b>Kā putaka me te Whakapōtaetaka - Results &amp; Graduation .....</b>	<b>39</b>
Accessing Your Results .....	39
Academic Transcripts.....	39
Receiving Your Qualification .....	40
Graduation.....	40
<b>Kā ture me kā tikaka - Policies &amp; Procedures.....</b>	<b>41</b>
Academic Policies .....	41
Academic Support and Progression.....	41
Formal Academic Contract.....	41
Academic Misconduct.....	42
Plagiarism .....	42
Use of Artificial Intelligence (AI) Tools .....	42
Cheating .....	42
Educative Processes.....	43
Penalties.....	43
Probation .....	43
Exclusion .....	44
Suspension .....	44
Cancellation of Enrolment.....	44
Refusal of Future Enrolment.....	45
Copyright and Ara Learners .....	45
Faculty related Health and Safety.....	47

**Kā rauemi - Resources .....47**  
First Day Information .....48

# Nau mai ki Ara - Welcome to Ara

Kia ora

## **Welcome to the Faculty of Culture and Services.**

We have a long tradition of providing quality training by inspirational mentors. Our goal is to advantage you with courses that matter alongside tutors that are here to help and guide you. They are committed to your success so when you graduate, you're confident, work ready and equipped to succeed.

We work closely with our professional industry colleagues ensuring our programmes are exemplars of contemporary best practice.

Our training, along with your smile, your special attention to detail and awareness of guests and clients' needs, make your time spent here truly worthwhile. You'll be applying what you're learning to real tasks and projects in environments that mimic real workplaces preparing you for a career both nationally and internationally.

As a learner, you have access to a range of Ara facilities and services that are aimed at supporting your achievement. I encourage you to make the most of the all the opportunities offered. I am confident that your commitment to your education will result in a successful and fulfilling career.

I wish you all the best with your studies this year.

**Peter Sawyer**

**Dean - Faculty of Culture and Services  
2026**

# Kia rite ki te ako Getting ready for study



## Tō Rangi Tuatahi - Orientation & Your First Day

Are you ready for your first day of class? Check out your start date and where you need to be. You can also find useful information on [MyAra](#). To access MyAra (from 21 days prior to your course beginning), you must have a current Ara network login and password. You can use [Ara Self-Service Password Reset](#) to activate your network account.)

### Your First Day 2026

#### **NZ Certificate in Hairdressing (Salon Skills – Introductory) - Christchurch**

**Date** Monday 20 July, 9.30am  
**Venue** Paxus House, 144 High Street  
**Wear** Tidy dress

#### **NZ Certificate in Hairdressing (Salon Skills) - Christchurch**

**Date** Monday 23 February, 9.00am  
**Venue** Paxus House, 144 High St  
**Wear** Tidy dress

#### **NZ Certificate in Hairdressing (Professional Stylist) - Christchurch**

**Date** Monday 23 February, 9.00am  
**Venue** Paxus House, 144 High Street  
**Wear** Tidy dress

#### **NZ Certificate in Hairdressing (Salon Skills) - Timaru**

**Date** Monday 23 February, 9.00am  
**Venue** Room TF101, 32 Arthur Street, Timaru Campus  
**Wear** Tidy dress

On your first day (orientation), you will be introduced to your tutors and new classmates, be given an overview of this programme, including:

- Welcome
- Programme overview
- Course details
- Campus familiarisation
- Policies and procedures
- ICT access
- Programme handbook and timetable
- Stationery, equipment lists and timetables will be provided

### **Returning students**

Please check your [timetable](#) for your first class details.

## **What you will need**

**Bring note taking items** – pens and highlighters. – pens and highlighters and a padlock (there are limited lockers available for learners)

## **First Day Information**

[For further information see Appendix 1.](#)

## **Logins**

If you need assistance with logins etc, contact ICT [ictservicesdesk@ara.ac.nz](mailto:ictservicesdesk@ara.ac.nz) or call 03 940 8800.

## **Timetable information**

All timetables are available on [MyAra](#).

## **How to find your way around**

Campus maps can be found [here](#).

## **Parking and bus information**

Campuses (excluding Manawa) have parking available. Payment and parking stickers may be required. Learn more about parking and biking. Or find out about bus services [here](#).

## **Ara Whakatau, your official welcome**

You are warmly invited to attend the official welcome to Ara for all learners, staff and whānau (family). The whakatau is a welcoming ceremony, similar to a pōwhiri, involving mihi (speeches), waiata (song) and will conclude with kai timotimo (light refreshments).

Click [here](#) to find out when the whakatau will be.

## **International learners**

You will be invited to an international orientation as well as the programme orientation. You should attend both.

# Korero Nui - Important Information

## Programme Information Handbook

This handbook is heavy on detail and sometimes quite formal. There will be things you want to know and other things you will only refer to when something comes up.

Here are some quick highlights of what is in the following pages:

- The detail and the rules about the qualification you have enrolled in
- Ara expectations about how you will behave and what your rights are
- How Ara checks that you are a genuine student (like your attendance)
- A quick access guide to getting support
- How assessments work and the grades that are used
- The assessment regulations that could support you to pass and what forms to use (extensions, resits and more)
- Getting your results and going to graduation
- Key academic policies
- Health and safety information related to your study
- Any afterhours access arrangements

**Ask your tutor or Operations Administrator if you need help to find the information you are looking for.**

## Learner Information Handbook

We recommend that you read your Programme Handbook in conjunction with the [Learner Information Handbook](#) (also available on MyAra) which has more detailed information about support and services available to learners at Ara.

## Health and Safety

Please refer to the [Learner Information Handbook](#) for general Health and Safety information and evacuation details. In an emergency advise a staff member, and if no one is available phone 111.

For more detail about your faculty's requirements and afterhours arrangements please read the [Kā tū whare – Facilities](#) section of this handbook.

## Attendance

Experience has shown that if you attend regularly and participate in the class activities and assessments you are more likely to succeed. Full attendance and commitment are encouraged. You are expected to be punctual and must comply with the various behaviour and safety requirements of classrooms, workshops and labs.

For an International learner satisfactory progress is defined as 100% attendance and successful completion of 75% or more of your courses.

**Let Ara know when you are absent from classes or if you are sick.**

**Contact your tutor or advise the Faculty by emailing [hospitalityandserviceindustries@ara.ac.nz](mailto:hospitalityandserviceindustries@ara.ac.nz)**

## Non-Engagement

Ara has processes to deal with learners who formally enrol here but do not “engage” with their studies. That is, if you do not attend and/or participate and/or submit assignments and/or sit assessments or only attend briefly or spasmodically and/or do not engage significantly.

**Our faculty process follows these steps if you are a no-show at the start of teaching:**

- 1** We will attempt to contact you 3 times and if we are not successful, we will withdraw you (1) within 3 days if there is a waitlist of other learners who want to enrol , or (2) within 10% of the length of your enrolment (often 1 – 2 weeks)

---

- 2** You will receive an email, text or phone call asking why you have not been attending

---

- 3** There will be no academic or financial penalty from Ara, but you could be overpaid by Studylink

Our faculty process follows these steps for disengaged learners:

- 1** The registers are checked and if your engagement and attendance is a concern, we will talk with you

- 2 You will receive an email or phone call asking why you have not been attending. You may receive a non-engagement letter

---

- 3 We will attempt to contact you 3 times

---

- 4 You may be placed on a Formal Academic Contract or withdrawn

---

- 5 You will receive a WD grade (after 10% of the duration of the course) or a DNC grade (after 80% of the duration of the course)

**If you are struggling with attendance, we fully encourage you to talk this over as soon as possible with your tutor.**

## Drugs and Alcohol

In line with the expectations of many workplaces, Ara has procedures to ensure the health and safety of all learners, staff and visitors, while undertaking Ara activities.

Ara has **zero tolerance** for the misuse or abuse of alcohol and/or illegal/controlled drugs, possession and/or use of illegal/controlled drugs/ substances, or intoxication on all campuses/learning sites.

Many learning activities involve high-risk situations where clear thinking, decision-making, and machinery operation need to be conducted safely. These activities cannot be compromised.

You can download the policy from [CPP506 Drugs & Alcohol Policy](#).

## Artificial Intelligence (AI) Tools

When submitting work for assessment, you must adhere to Ara's Assessment and Academic Misconduct policies and not present AI such as ChatGPT as your own work. Learning Services have resources to help you learn to paraphrase or reference another person's work to avoid academic misconduct.

For more detail, please read the [Kā ture me kā tikaka - Policies & Procedures](#) section of this handbook.

## Kā Raki whakahirahira - Important dates

### SEMESTER ONE

### DATES

#### TERM 1

**16 February – 3 April**

Waitangi Day

Friday 6 February

Whakatau

Wednesday 4 March

Good Friday

Friday 3 April

Easter Monday

Monday 6 April

Easter Tuesday

Tuesday 7 April

#### TERM 2

**20 April – 3 July**

Anzac Day

Monday 27 April (Observed)

King's Birthday

Monday 1 June

Matariki

Friday 10 July

#### MID YEAR BREAK

**6 July – 17 July**

### SEMESTER TWO

### DATES

#### TERM 3

**20 July – 25 September**

South Canterbury Anniversary

Monday 28 September

#### TERM 4

**12 October – 20 November**

Labour Day

Monday 26 October

Canterbury Anniversary

Friday 13 November

## Kā whakapātaka - Contact Details

### Key Staff

**Heather McEwan**

Portfolio Manager

(03) 940 8372

021 707 207

Room: U323

[Heather.McEwan@ara.ac.nz](mailto:Heather.McEwan@ara.ac.nz)

---

**Gretchen McKinley**

Operations Administrator

Room: U301A (Christchurch)

[Gretchen.McKinley@ara.ac.nz](mailto:Gretchen.McKinley@ara.ac.nz)

---

**Katherine Harris**

Operations Administrator

(03) 687 1807

Room: Student Central – Timaru Campus

[Katherine.Harris@ara.ac.nz](mailto:Katherine.Harris@ara.ac.nz)

---

**Student Advisors (Domestic/International)**

Student Central

X Block – Madras Street Campus

TA Block – Timaru Campus

[Learnersupport@ara.ac.nz](mailto:Learnersupport@ara.ac.nz)

---

## Teaching Staff

Name/Teaching area	Room	Email
<b>Nichola Arnott</b> Christchurch	PX213	<a href="mailto:Nichola.Arnott@ara.ac.nz">Nichola.Arnott@ara.ac.nz</a>
<b>Nicky Evans</b> Christchurch	PX214	<a href="mailto:Nicky.Evans@ara.ac.nz">Nicky.Evans@ara.ac.nz</a>
<b>Megan Jamieson</b> Christchurch	PX213	<a href="mailto:Megan.Jamieson@ara.ac.nz">Megan.Jamieson@ara.ac.nz</a>
<b>Tanya Lloyd</b> Christchurch	PX213	<a href="mailto:Tanya.Lloyd@ara.ac.nz">Tanya.Lloyd@ara.ac.nz</a>
<b>Jo Mills</b> Christchurch	PX213	<a href="mailto:Joanne.Mills@ara.ac.nz">Joanne.Mills@ara.ac.nz</a>
<b>Gayleen Richardson</b> Timaru	TC206	<a href="mailto:Gayleen.Richardson@ara.ac.nz">Gayleen.Richardson@ara.ac.nz</a>

## Hair Salon, 144 High Street, Christchurch

**Phone Number:** (03) 940 8033

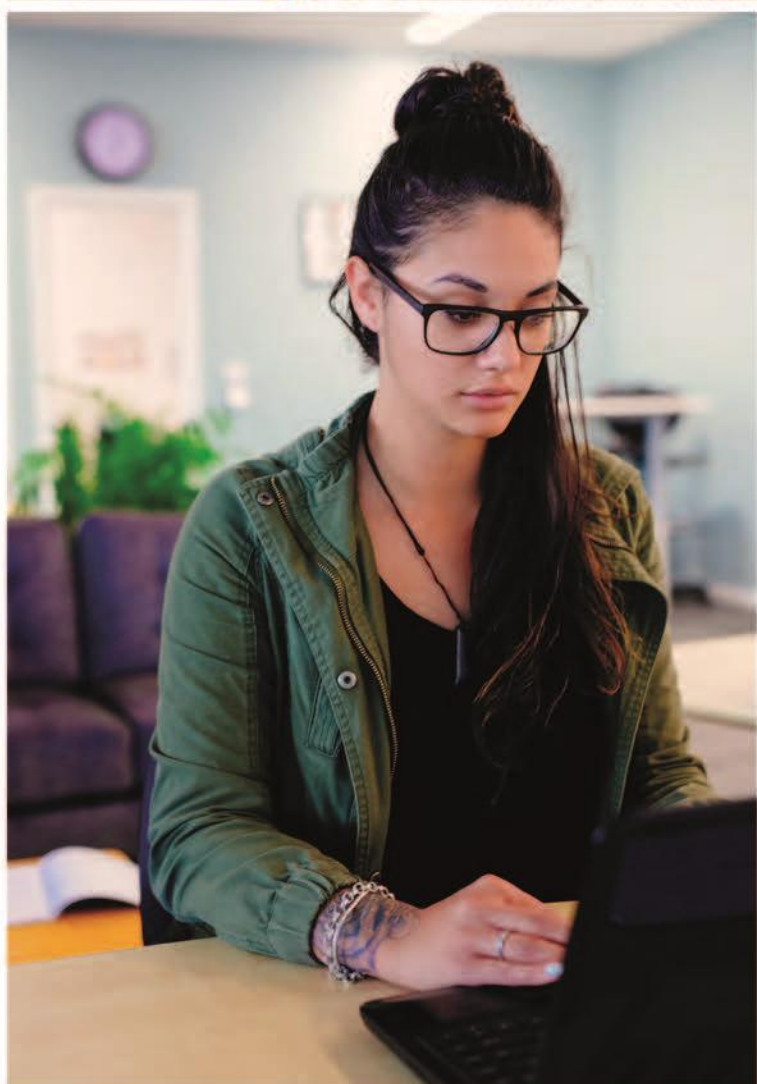
**Email:** [Hairdressingsms@ara.ac.nz](mailto:Hairdressingsms@ara.ac.nz)

## Hair Salon, 32 Arthur St, Timaru

**Phone Number:** (03) 687 1947

**Email:** [Gayleen.Richardson@ara.ac.nz](mailto:Gayleen.Richardson@ara.ac.nz)

# Tō Akoako Your study



# Taipitopito akoraka - Programme Details

## NZ2201 – New Zealand Certificate in Salon Skills (Introductory)

### Programme Aim

The aim of this programme is to provide people preparing to work in the barbering, beauty or hairdressing sectors of the beauty services industry with an overview of the working environment of a salon, career pathway opportunities, and the basic knowledge and skills required to undertake employment and/or further training in their chosen sector.

The target market for this programme is primarily dual enrolment learners, and recent school leavers wishing to enter the hairdressing or beauty services workplace.

### Graduate Profile

Graduates of this qualification will be able to:

- Apply knowledge of the salon workplace, and the client journey through a salon, to work as an entry-level person.
- Operate safely and hygienically and meet the personal hygiene and presentation requirements of the salon workplace.
- Provide client and salon support services to a professional standard.
- Communicate appropriately with clients, peers and supervisors and follow instructions within the salon workplace.
- Apply knowledge of a personal budget to support work as an entry-level person within a salon, and produce a curriculum vitae to support career progression in the beauty services industry.

### Programme Regulations

The New Zealand Certificate in Salon Skills (Introductory) (Level 2) is a six month full time equivalent programme of study requiring the successful completion of 60 course credits.

The programme comprises 60 compulsory course credits at level 2.

Minimum completion time: None specified (allowing for Recognition of Prior Learning, Cross Credit and Credit Transfer).

Maximum completion time: 2 years. Any extension to this period would require a written application from the Portfolio Manager or delegate to the Faculty Programme Group.

It is essential that all learners are proactive in organising their own models for practice, evidence, and assessment tasks.

## Programme Matrix

Use the following table as a guide to the courses in your programme. You can find out how many credits each course is worth, and how many credits and courses you need to do to complete your study.

Code	Course Title	Level	Credits	Course Factor
<b>Compulsory</b>				
HDSS210	Industry Practice and Image	2	15	0.1250
HDSS211	Client Support and Sustainability	2	15	0.1250
HDSS212	Industry Support	2	15	0.1250
HDSS213	Industry Preparation	2	15	0.1250
<b>Total</b>			<b>60</b>	<b>0.5000</b>

## NZ2411 – New Zealand Certificate in Hairdressing (Salon Support) (Level 3)

### Programme Aim

The aim of this programme is to enable graduates to be employed as a junior or assistant stylist in a hairdressing salon or progress on to further study in the New Zealand Certificate in Hairdressing (Professional Stylist) (Level 4). It is targeted at people who may have no prior knowledge or experience in hairdressing and who wish to learn hairstyling and colouring skills and basic hair cutting techniques. It will produce graduates with the knowledge, practical skills and attributes to contribute to the effective operation of a salon and perform limited salon and client services.

## Graduate Profile

Graduates of this qualification will be able to:

- Communicate and interact appropriately with clients, peers and supervisors within the salon, and undertake reception duties such as making appointments to support the profitability of a salon.
- Apply hairdressing theory and practice to perform limited scope client consultations, including hair and scalp analysis.
- Apply and remove shampoo, conditioner, and treatments, and remove colour from clients' hair and scalp.
- Recommend home haircare products to meet a range of client needs.
- Apply knowledge of hair shape, form, texture, and direction to perform hair styling tasks using a range of techniques and styling tools.
- Use and maintain cutting tools to demonstrate basic cutting techniques.
- Follow instructions to undertake a range of colouring services and de-colouring services; and assist with chemical reformation services.
- Meet the personal hygiene, presentation, health, safety, and environmental requirements of a salon.

## Programme Regulations

The New Zealand Certificate in Hairdressing (Salon Support) is a one year full time equivalent programme of study requiring the successful completion of 120 compulsory course credits at level 3.

The maximum period of time to complete the programme is 6 years. Any extension to this period would require a written application from the Portfolio Manager or delegate to the Faculty of Culture and Services Group.

It is essential that all learners are proactive in organising their own models for practice, evidence, and assessment tasks.

## Programme Matrix

Use the following table as a guide to the courses in your programme. You can find out how many credits each course is worth, and how many credits and courses you need to do to complete your study.

Code	Course Title	Level	Credits	Course Factor
PERS3201	Professional Identity	3	10	0.0833
PERS3202	Salon Discovery	3	15	0.1250
PERS3203	The Art of Hair Design	3	20	0.1667
PERS3204	Reformation Basics	3	15	0.1250
PERS3205	Introduction to Sculpture	3	15	0.1250
PERS3206	Colour Basics	3	20	0.1667
PERS3207	Client Journey	3	15	0.1250
PERS3208	Grand Finales	3	10	0.0833
<b>Total</b>			<b>120</b>	<b>1.000</b>

## NZ2413 – New Zealand Certificate in Hairdressing (Professional Stylist) (Level 4)

### Programme Aim

The aim of this programme is to enable graduates to be employed under broad guidance as a professional hairstylist within a commercial environment or progress on to further study in the New Zealand Certificate in Hairdressing (Advanced Colouring Skills) (Level 5). It is targeted at people with prior knowledge of hairstyling and colouring tasks and basic hair cutting techniques, who wish to develop skills and knowledge to become a professional hairstylist. It will produce graduates with the knowledge, skills, and attributes to provide integrated fashion services as professional hairstylists capable of operating under broad guidance.

### Graduate Profile

Graduates of this qualification will be able to:

- Provide client consultation, diagnosis, care and advice to establish a plan for future hair treatment services and home haircare as a professional hairstylist.
- Apply hairdressing theory and practice to safely and professionally complete a broad range of integrated, current fashion services to meet client

requirements, including cutting, styling, colouring, colour correction, and chemical reformation.

- Manage multiple integrated client hairdressing services in a timely manner to support a salon's profitability.

## Programme Regulations

The New Zealand Certificate in Hairdressing (Professional Stylist) is a one year full time equivalent programme of study requiring the successful completion of 120 compulsory course credits at level 4.

The maximum period of time to complete the programme is 6 years. Any extension to this period would require a written application from the Portfolio Manager or delegate to the Faculty of Culture and Services Group.

It is essential that all learners are proactive in organising their own models for practice, evidence, and assessment tasks.

A minimum of 60 work integrated learning hours is required.

Code	Course Title	WIL*	Level	Credits	Course Factor
<b>Compulsory</b>					
PERS4201	Professional Style Attributes	6.87	4	10	0.0833
PERS4202	Sculpture	6.87	4	20	0.1667
PERS4203	The Art of Advanced Hair Design	6.87	4	15	0.1250
PERS4204	Reformation Designs	6.87	4	15	0.1250
PERS4205	Advanced Colour Design	6.87	4	20	0.1667
PERS4206	Fashion Colour and Sculpture	6.87	4	15	0.1250
PERS4207	Advanced Client Journey	6.87	4	15	0.1250
PERS4208	Advanced Grand Finale	6.87	4	10	0.0833
<b>Total</b>		<b>55</b>		<b>120</b>	<b>1.000</b>

\*Work integrated learning

## Our Access to Your Work

We may contact you to discuss the right to copy, reproduce, and use your learner work for promotional and education purposes for Ara.

## Transition Arrangements

Learners who have completed unit standards from previous qualifications but not completed the National Certificate in Hairdressing (Professional Stylist) will be able to receive recognition of prior learning for these unit standards. Learner transition will be managed on a case-by-case basis with individual learning plans developed.

Transition arrangements adhere to the principle that no learner will be disadvantaged by this transition.

# Kā tika me kā kaweka o te tauira - Learner Responsibilities and Rights

## Learner Responsibilities and Rights

The Ara community consists of a diverse range of people and cultures, and we respect all members of our community. Our aim is to have a community where learners respect themselves and others, a community where healthy social interactions and academic pursuits are expected. To create and maintain the best possible teaching and learning environment, you are protected by basic rights and are expected to respect the rights and responsibilities of others.

### Useful Contacts:

Independent Student Advocate: Duncan Dunbar

Email: [duncan.dunbar@ara.ac.nz](mailto:duncan.dunbar@ara.ac.nz) | Mobile: 027 273 6246

Student Voice Coordinator:

Email: [studentvoice@ara.ac.nz](mailto:studentvoice@ara.ac.nz)

## Your Responsibilities as a Learner

As a learner here, Ara expects you to:

### Behave safely

- Take care when using equipment and facilities.
- Wear suitable clothing.
- Follow health and safety guidelines and instructions.
- Not endanger yourself or others.
- Follow relevant professional guidelines.
- Ensure you are not intoxicated or under the influence of drugs on Ara premises or when involved in Ara related activities both formal and informal, with your programme, field trips, internships etc.

### Respect others

- Be sensitive to personal, social, and cultural differences.
- Respect the needs, rights, and freedoms of others.
- Help to uphold the integrity of Ara qualifications by discouraging/reporting dishonest practices.

### **Observe Ara rules**

- Behave appropriately for a tertiary education environment.
- Genuinely attempt to meet all course requirements including financial obligations.
- Comply with visa requirements.
- Be honest when completing assignments/other assessments.
- Comply with requirements of programme handbooks.
- Follow Ara policies and regulations (refer [Ara Policy Library](#)).

## **Your Rights as a Learner**

Ara will protect your right to fairness. You have a right to:

### **Fairness**

- Open and accurate information.
- Fair evaluation and assessment.
- Have any problems handled as quickly as is practical and consistent with 'natural justice'.
- Personal privacy.
- Support, representation, and advocacy.

### **Ara Respects your right to:**

- Academic freedom, defined as 'freedom, within the law, to question and test received wisdom, to put forward new ideas and to state controversial or unpopular opinions.' (Education and Training Act 2020)
- Freedom from any form of harassment, bullying, or unjust discrimination.
- Respect for personal, social, and cultural differences.
- Representation in the development, implementation, and review of policies.

### **Ara will protect your right to Standards:**

- Study programmes that meet internal and external standards for approval and registration.
- To have competent and effective teachers.
- Appropriate support services delivered in a professional manner.
- Facilities and resources that meet or exceed Health & Safety legislation.

### **Concerns / Complaints:**

Your rights will be upheld by Ara management. If you think they have been infringed, in the first instance please contact your course tutor. If it is not appropriate to contact your tutor regarding your complaint, or the matter has

not been resolved, please contact your Portfolio Manager/Programme Manager or Student Advocate and/or the Student Life Team

## **Unacceptable Behaviour for Learners, or Visitors at Ara**

The following are examples of behaviour which are not acceptable for anyone (learners, or visitors), at Ara or involved in Ara related activities:

- Breaking any NZ law (e.g., assault, theft).
- Any form of cheating (including plagiarism and other dishonest practices).
- Misuse of technology, software, hardware, or communication systems provided by Ara (refer Ara Code of Conduct for ICT Users in particular).
- Any form of harassment, bullying, or unjust discrimination including social media.
- Unacceptable sexual behaviour (e.g., sexual harassment, accessing pornography/other restricted material).
- Misuse of alcohol, drugs or other substances affecting behaviour, health, or safety.
- Smoking (including vaping) on Ara campuses. (Ara is a smoke free campus).
- Violence or threats of violence.
- Vandalism or other abuse of facilities and buildings.
- Disruptive behaviour in class (e.g., arriving late, use of any electronic device, interfering with the learning of other individuals).
- Inductions (informal) are not permitted at Ōtautahi House or on other Ara premises and are strongly and expressly discouraged by Ara.
- The above is not an exhaustive list of unacceptable behaviours. Where appropriate, Ara reserves the right to contact or report to external authorities.

Academic staff have the responsibility to maintain a safe and effective learning environment.

They may ask you to leave the class if your behaviour indicates limited ability to be safe, disturbance to others learning, or puts others at risk.

Ara takes this code of conduct seriously. Your marks, reports, and references may include an assessment of your behaviour, as well as your educational achievement. Serious infringement may lead to probation, suspension, or cancellation of a current enrolment and/or refusal of a future enrolment (see relevant policies). This may be referred to an appropriate external authority e.g., NZ Police

## **Learner Behaviour in Class / Classroom Maintenance**

Be respectful of other learners and the classroom environment, following classroom specific rules and requirements. To avoid any distractions, you must ensure any electronic device you have on you/with you is diverted, not set to ring, or switched off. Both staff and students have a responsibility to ensure this happens

### **Dress Code**

Unless a specific uniform is specified, there is no written dress code. However, you're expected to attend classes dressed in a way which is generally acceptable and be "dressed for the occasion" when going on a site visit or undertaking a Cooperative Education Project. You may be prevented from going on site visits if the staff member is of the opinion that you're not dressed for the occasion. In specific courses, a "dress code" and standard is required.

## Kā Taunakitaka Mōu – Support for You

### Quick Reference – Where to Find Help If You Have Feedback or Want to Raise an Issue

The Education (Pastoral Care of Tertiary and International Learners) Code of Practice sets out the expectations that tertiary education organisations need to consider how their overall systems and resources support learners' wellbeing and safety.

For more detailed information on the code, and support areas listed below, please refer to the [Learner Information Handbook](#) on MyAra.

Support Area	Details	People	Links
<b>Faculty Staff</b>	This team are your first port of call for issues impacting your ability to study	Tutor Programme Leader Programme Manager Portfolio Manager	
<b>Student Reps</b>	Student reps are invited to attend student rep meetings within your faculty where they can raise issues on your behalf	Student Voice Posters of your student reps are displayed in your faculty	<a href="#">Student Voice</a>
<b>Student Services</b>	Ara offers a wide range of student services	Student Advisors Health Centre Student Voice	<a href="#">Student Support</a>
<b>Te Pae Ora</b>	A wellbeing hub for ākonga		<a href="#">Te Pae Ora   Te Pūkenga</a>
<b>Independent Student Advocate</b>	Student Advocacy is available to assist you if you are facing difficulties within or beyond Ara	Duncan Dunbar 027 273 6246 <a href="mailto:Duncan.Dunbar@ara.ac.nz">Duncan.Dunbar@ara.ac.nz</a> X106 (Rakaia Centre)	<a href="#">Student Advocacy</a>

Support Area	Details	People	Links
<b>Complaints Process</b>	that could affect your study		
	Ara has a process to support you and respond if you have a concern or complaint about a course, tutor, or another aspect of your programme	Complaints Co-ordinator	<a href="#">CPP117-Raising-problems-or-complaints</a> <a href="#">CPP117a-Raising-problems-or-complaints-form</a>
<b>SafePlace</b>	SafePlace is the tool we use to report risks, accidents and other incidents	Safety & Wellbeing Co-ordinator Safety & Wellbeing Business Partner	<a href="#">SafePlace FAQ for Learners</a>
<b>Important Policies</b>	All Ara Corporate and Academic Policies can be found at <a href="#">Ara Policy Library</a>		<a href="#">Student Rights and Responsibilities</a> <a href="#">Addressing Bullying, Harassment and Discrimination</a>

# Kā Aromatawai - Assessments

## Assessment Information

At the start of each course, you will be given a **Course Outline**. Before each assessment you will be given an **assessment brief**. They will show:

The number, type, and due dates for all assessments, including tests and assignments, and will give you details on:

- The weighting of each assessment in your course that contributes to your final grade, if applicable.
- The assessment policy for resits, second results and alternative assessments, if they are different from the policies in this document.
- The time frame for getting your marked assessments back from tutors, if they are different from those stated in this document.
- The penalties for handing assessments in late, if they are different from those stated in this document. These may be different for each course.

If you do not receive this information, talk to the course tutor or Portfolio Manager.

## Assessment Types

**Formative assessment** Verbal and written feedback that takes place throughout classes and the programme.

---

**Summative assessment** Assessments throughout the year that are based on learning outcomes for the course and determine how well you have achieved each outcome. You are given grades and written feedback. These assessments may include practical tests and projects.

The contents of the course work will be explained by the tutor for each course. If at any point your tutor or Portfolio Manager is concerned about your progress, they will let you know.

## Academic Integrity

Ara requires learners to be honest and act with integrity in their learning and assessments.

You are required to:

- present your own original work for assessment
- acknowledge contributions from other sources by using the referencing format required for the programme (failure to do this correctly may be regarded as plagiarism); this includes direct copying, paraphrasing, summarising, and the rearranging of, another person's words or idea/s
- not cheat in tests or examinations
- ensure you follow all instructions and the correct procedures (e.g., no use of mobile phones or personal electronic devices)
- not enter into any agreements with other learners to collude on assignments
- collaborate only as permitted
- not over- or misrepresent the individual contributions of members of any group assignment
- not knowingly help others to cheat
- not present another person's assessment as your own (this includes purchased assessments)
- not act or behave in a way that prevents others from completing their assessments
- keep written and electronic work secure to prevent others from accessing and copying work. (2)

Any exceptions to the above are clearly stated in the information and requirements for the course.

By enrolling at Ara, you agree to your work being reviewed by various means to confirm an assessment is your own work. This includes the use of similarity detection software.

Any breaches of academic integrity follow the process set out in the academic integrity procedures. For more detailed information, please refer to the [Academic Integrity Policy](#).

## **Submitting Your Work**

Your tutor will let you know how to submit your work. You may be required to submit your work manually or electronically. If you submit your work electronically, keep a copy until your official results are published at the end of the semester. If you have any questions, contact your Portfolio Manager.

**Note:** Ara uses as part of its assessment processes electronic plagiarism detection. You will, from time to time, be required to submit assessments for scanning. Electronic copies of assessments must be retained by you until the official results are published after the end of semester or year.

## Quality Assurance

Your assessments and exam scripts may be used for internal and external moderation, monitoring, programme reviews, aegrotats, and the resolution of academic appeals and complaints. This helps Ara meet internal and external academic quality assurance requirements. If your assessments are used this way, before they are used, any information that could reasonably be expected to identify you will be removed.

## The Grade Scale

The various assessments within a course will be combined according to the weightings shown in the course descriptor, and a grade for the course as a whole will be assigned from the table shown below. A "C-" grade and above represents a pass for the course.

The following grade scale (G29aa) will be used for all courses on the programmes unless advised otherwise in the course descriptor:

## Marked Grades

Grade	Mark range	Pass or fail
A+	90-100	Pass
A	85-89	Pass
A-	80-84	Pass
B+	75-79	Pass
B	70-74	Pass
B-	65-69	Pass
C+	60-64	Pass
C	55-59	Pass
C-	50-54	Pass
D	40-49	Fail
E	0-39	Fail

## Other Grades

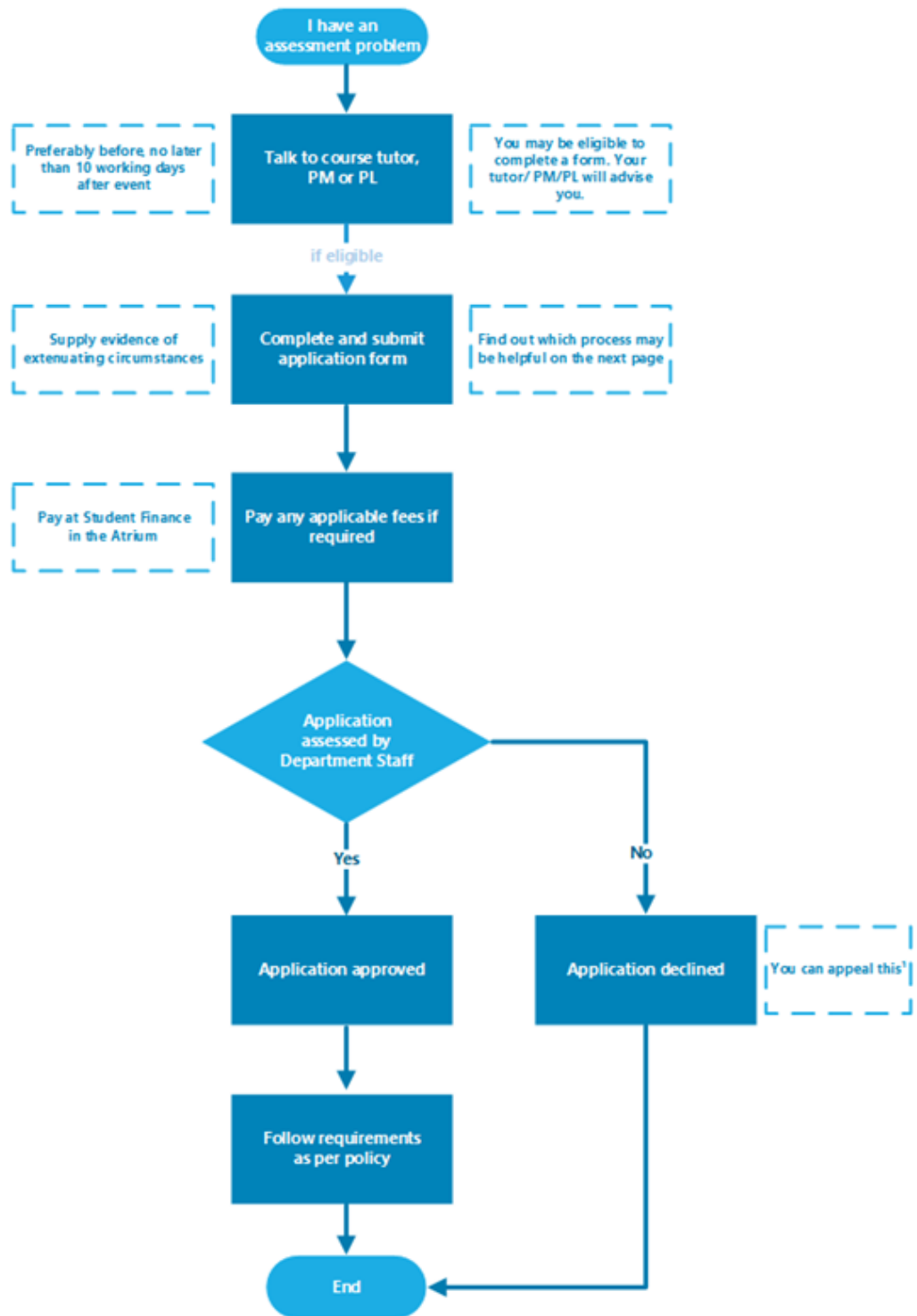
Other grades that may be awarded for particular circumstances in achievement-based courses include:

Course result	Grade	Description
Pass	Pass	Awarded pass and no appropriate grade can be awarded
Fail	Fail	Not passed and no appropriate grade can be awarded
Credit Transfer	CT	Course credit awarded by credit transfer
Cross Credit	CC	Course credit awarded by cross credit
Recognition of Prior Learning	P	Course credit awarded by Recognition of Prior Learning
Did not complete	DNC	Did not complete course requirements
Withdrawn	W	Formal withdrawal within the non-academic penalty period
Aegrotat	AEG	Awarded pass following consideration of impaired performance / aegrotat application. Where a grade is able to be determined AEG (Grade) will be recorded.
Restricted pass	RP	Where a course was narrowly failed (45-49%) and is compensated by overall good performance in the relevant subject. It cannot be used to meet pre-requisite requirements
Conceded Pass	CON	Where there is considerable evidence that marginal failure (45-49%) in one course is compensated by good overall performance. Only one conceded pass may be granted to a learner towards a particular qualification

Course result	Grade	Description
Conditional Pass	CP	Where a course was narrowly failed (45-49%) and an agreed portion of work or assessment is to be completed.

# Kā tikaka aromatawai - Assessment Regulations

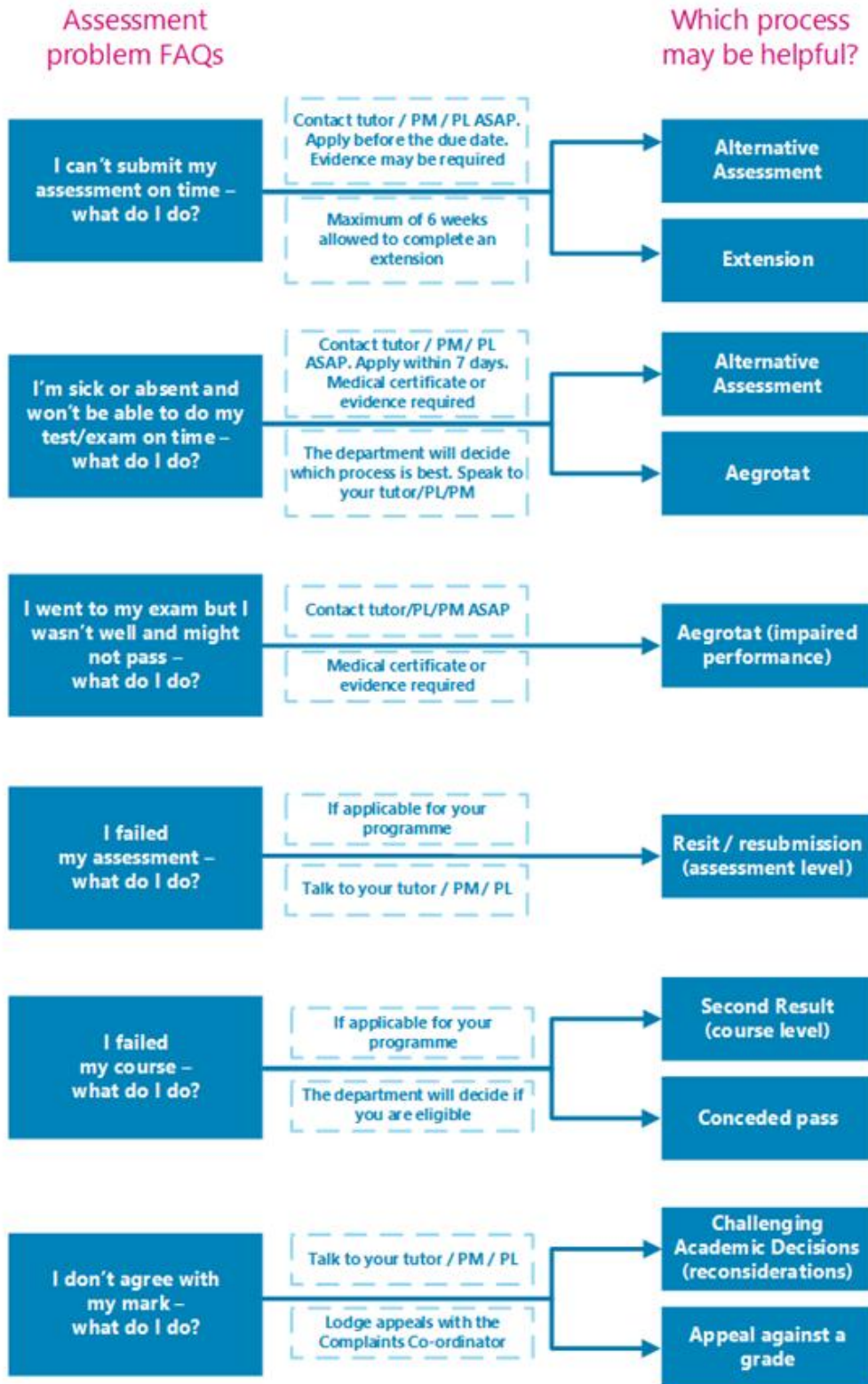
## Regulations Flowchart



\*The student lodges the appeal in writing with the Complaints Co-ordinator with a copy to the Head of Department

# Which form do I use?

\* Always speak to your tutor, Programme Manager (PM) or Programme Leader (PL) to see if you are eligible



## Extensions

If you anticipate difficulty in submitting assessments by the due time and date you may be able to request an extension.

For information about how to apply for an extension of time, see [Assessment Policy](#) - scroll down and find **3.14 Extensions**. You can download the form from [Application for Extension of Time](#).

## Late Submissions

Other than approved extensions, late submissions will have 10% deducted for each day (or part thereof) of lateness up to a maximum of five days after it was due. **If an assessment is submitted more than five days after it was due, it will not be marked unless special circumstances are approved by the HoD.**

**Unless approved, we will not accept the assessment and a Not Passed (NP) or equivalent failing grade will be assigned.**

## Resits or resubmission of assessment tasks

If you have submitted and failed an assessment task you may be able to apply for a resubmission resit.

For information about how to apply for a resit or resubmission, see [Assessment Policy](#) - scroll down and find **3.15 Resits and Resubmissions**. You can download the form from [Application for Resit or Resubmission](#).

## Second Results (course level)

If you receive a fail grade in a course, you may be able to apply for a reassessment of the course.

For information about how to apply for a second result, see [Assessment Policy](#) - scroll down and find **3.16 Second Results**. You can download the form from [Application for Second Result](#).

## Assessment in Te Reo Māori

You can request to have your assessments conducted in Te Reo Māori, except where the task requires English language or other language capability. Other exceptions may apply.

For information about how to apply for assessment in Māori see [Assessment Policy](#) - scroll down and find **3.4 Assessment in Te Reo Māori**.

## Marks Carried Forward

You may be able to apply to carry marks forward for completed assessments to the next available occurrence of the course and not redo those assessments.

For information about how to apply for marks carried forward, see [Assessment Policy](#) - scroll down and find **3.18 Marks Carried Forward**. You can download the form from [Marks Carried Forward Application form](#).

## Supported Assessment

You may be able to apply for special assistance in order to undertake an assessment.

For more information about how to apply for additional assessment arrangements for disabled learners, see [Assessment Policy](#) - scroll down and find **3.19 Procedures for additional assessment arrangements for disabled learners**.

## Recognising Prior Knowledge and Skills

If you believe that a qualification, course or unit standard you have previously completed a recognised educational institution, or work/life experience, may be relevant to the qualification you are studying, you could apply for recognition of your prior knowledge and skills.

The previous grade is carried forward for any Cross Credit or Credit Transfer, and the Pass (P) grade given where a standard grade cannot be stated.

For information about how to apply for credit recognition, see [Credit Recognition](#). You can download the form from [Credit Recognition Application](#).

## Alternative Arrangements

If you are unable to sit a test or exam on the scheduled date, or complete an assessment on the due date, you may be able to apply for an alternative assessment.

For information about how to apply for an alternative assessment see [Assessment Policy](#) - scroll down and find **3.13 Alternative Assessment Arrangements**. You can download the form from [Application for Alternative Time for Test / Exam](#).

## Aegrotat

You may be able to apply for an aegrotat when illness, injury, bereavement, childbirth, or other unforeseen critical circumstances occur on or immediately prior to the day of assessment, and prevent you from attending the assessment or seriously impair your performance during the assessment itself.

For information about these regulations, see [Aegrotat Pass Regulations](#). You can download the form from [Aegrotat Application](#) and the Practitioner Statement form from [Aegrotat Practitioner Statement](#).

## Reconsideration of Assessment Decisions

If you have reason to believe that the mark for a particular assessment is incorrect you may be able to apply for a reconsideration.

For information about challenging academic decisions (reconsideration), see Challenging Academic Decisions (Reconsideration) [Assessment Policy](#) - scroll down and find **3.20 Reconsiderations and Appeals**. You can also refer to [Reconsiderations and Appeals](#).

## Reconsideration of a Course Final Grade

If you have reason to believe that the grade for a particular assessment is incorrect you may be able to apply for a reconsideration.

For information about challenging academic decisions (reconsideration), see Challenging Academic Decisions (Reconsideration) [Assessment Policy](#) - scroll down and find **3.20 Reconsiderations and Appeals**. You can also refer to [Reconsiderations and Appeals](#).

## Appeal of Reconsideration Decision

If you consider that the outcome of the reconsideration process is incorrect or unfair, or a reconsideration is not available, you may appeal against the final grade awarded.

For information about challenging academic decisions (reconsideration), see [Assessment Policy](#) - scroll down and find **3.20 Reconsiderations and Appeals**. You can also refer to [Reconsiderations and Appeals](#).

## Conceded Pass

You may qualify for a conceded pass if you marginally fail a course.

For information about conceded passes, see [Assessment Policy](#) - scroll down and find **3.17 Conceded Pass**.

# Kā putaka me te Whakapōtaetaka - Results & Graduation

## Accessing Your Results

Results of individual assessments will be made available to you within fifteen (15) working days of your assessment due date.

These results may be returned to you in class or online. Final grades for each course will be available online within fifteen (15) working days of the end date of the course and accessible through My Ara at [MyAra](#) or through the My Ara app.

Any results displayed publicly will use unique identifiers such as student ID numbers, not student names.

**Note:** Staff members are under no obligation to advise you of your final grade for a course. After you have completed all the assessments in a course, we ask that you allow the staff time to complete the marking. At the end of semester staff members are under great pressure to submit final results to Academic Records so that they can be processed and then made available to all learners as soon as possible.

## Academic Transcripts

If you require your results to be printed, visit Central Academic Records (CAR) in A121 or email [academic.records@ara.ac.nz](mailto:academic.records@ara.ac.nz) to request a transcript.

## Access to Marked Assessments

You are entitled to access to your written work submitted for assessment.

Where assessed work is to be returned, time limits for collection will be advised by the faculty.

You may view copies of your examinations, but these are retained by Ara. Any time or access limitations will be advised by the faculty.

Please note that in order to meet internal and external academic quality assurance requirements, learner assessments and examination scripts may be used for the purposes of:

- internal and external moderation

- programme review
- aegrotats (if available)
- resolution of academic appeals and complaints

Assessments used for these purposes will have information, which could reasonably be expected to identify the individual removed before they are copied and used.

## Receiving Your Qualification

Once you have successfully completed your approved programme of study you will receive a notification advising you that your certificate is ready and will be posted to you.

**Note:** Please make sure your address details are up to date when you finish studying. Advise Academic Records if you are updating your address details after you receive the notification, so the correct address is used.

## Graduation

We hold several graduation ceremonies.

If you're eligible to graduate, you'll receive a communication from Ara advising you of this. You'll need to complete the online graduation form, by the date indicated, to register for your ceremony.

**Note:** If you believe you are entitled to graduate and do not hear from Ara please contact the Faculty Administrator or Academic Records.

For all information on graduation, including dates, please see [Graduation](#).

# Kā ture me kā tikaka - Policies & Procedures

## Academic Policies

All policies are accessible on the Ara website All policies are accessible on the Ara website [Ara Policy Library](#). Ara provides a student advocacy service.

It is well known that people learn better when they work together, and this is encouraged, but when it comes to assessment, collaboration (working together) is not permitted unless it is a formal part of the assignment set by the tutor(s). Each learner is also responsible for making sure his/her work is not able to be copied by others. Sharing or comparing tests, exams and assessments is prohibited and, if detected, will be treated as “academic misconduct”.

## Academic Support and Progression

Support is available if you, as a learner, are having difficulty meeting academic standards or you seek guidance, assistance or support with study related matters.

If you are not achieving satisfactorily you will receive specifically targeted advice and assistance at an early stage.

Academic staff members will work with you if you are not meeting academic standards to document and implement a plan. This will include identifying and monitoring goals, expected academic progress, timelines and support.

If satisfactory progress is not made then you will be invited to meet with the Portfolio Manager or his/her delegate, who will explain the circumstances, discuss the consequences, and give you the opportunity to present your view of events leading up to the meeting. Depending on the outcome of the meeting, a Formal Academic Contract may be entered into.

## Formal Academic Contract

If your progress as a learner in a current course is still considered by tutors to not be satisfactory you will be invited to a meeting and advised in writing by the Portfolio Manager or delegate.

The Formal Academic Contract will record the deficiencies or concerns, the progress which must be met, any assistance available, the time within which

progress or change must be demonstrated, and the method and criteria by which such progress or change will be measured.

For more information about Academic Support and Progression, see [Academic Support and Progression](#) - scroll down and find **3.3 Formal Academic Contract**.

## Academic Misconduct

Cheating, plagiarism and other dishonest academic practices have serious consequences in this programme and if you fail to meet academic standards you, as a learner, may be subject to educative processes or penalties.

### Plagiarism

Copying, taking or using someone else's work or ideas and presenting them as if they were your own original work or thought, without clear acknowledgement of the actual source.

### Use of Artificial Intelligence (AI) Tools

Generative Artificial Intelligence (AI) services such as ChatGPT can be used for learning. When submitting work for assessment, you must adhere to Ara's Assessment and Academic Misconduct policies. In relation to AI, this means;

- you must not present any output from any AI services as your own work in your assessment.
- you must use your own words.
- if you paraphrase or quote from a source such as a textbook, website and AI service, you must reference correctly.

If you submit an assessment using content copied directly from an AI service without acknowledgement, it is a form of academic misconduct.

### Cheating

Acting deceitfully or dishonestly to gain academic recognition or an academic result. Examples include copying answers from another person's work, taking useful information secretly into a test or exam, improperly accessing information about questions and/or answers, arranging for someone else to produce an assignment or to sit a test or exam.

## Dishonest Academic Practice

Any other act or omission that contravenes Ara academic requirements of a programme or course.

## Educative Processes

These are actions designed to assist you, as a learner, in understanding the expected standards and skills needed to succeed and may include:

- a facilitated discussion with an appropriate staff member
- a formal contract with Learning Services or other appropriate staff member for skills development including specific learning outcomes and timeframes
- additional work may be required
- a formal written warning may be given, or marks deducted.

## Penalties

These are actions designed to deter misconduct and/or deal with the consequences of it in a fair and appropriate way and may include:

- a decision not to mark or assess the work or record a mark/grade
- formally recorded fail / zero for the work concerned which remains on your academic record
- cancellation of credit already awarded if the academic misconduct is admitted/ established after assessments have been completed and recorded
- formal notice indicating 'Intentional Plagiarism' (or other misconduct) placed on academic record for a specified period of time
- formal written warning
- probation or suspension from the programme or other penalty.

## Probation

If your behaviour, as a learner, is unacceptable and of concern to staff or other learners, you will be advised of this in writing by the Portfolio Manager. This written warning is known as probation.

The written advice must briefly record the deficiencies or concerns, the progress or standards of behaviour which must be met, any assistance available, the time within which progress or change must be demonstrated, and the method and criteria by which such progress or change will be measured.

The progress or change required should be reasonable and the criteria for assessing whether the progress or change has been achieved should be easily understood and capable of being clearly demonstrated.

The written advice must include the warning that failure to make progress or achieve change may lead to suspension and/or cancellation of current enrolment(s) and/or refusal of future enrolment(s).

These requirements are known as the “terms and conditions of probation”.

**For more information about probation, see [Probation](#) - scroll down and find **3.4 Probation**.**

## Exclusion

An exclusion may apply to one or more specified courses, a whole programme, or all enrolment at Ara. An exclusion may also apply to one or more specified services or facilities.

## Suspension

Suspension is a short-term exclusion and is the formal process by which you, as a learner, are temporarily prohibited from attending classes in one or more courses and/or is refused access to one or more services/facilities provided by Ara. In serious circumstances a Trespass Notice may also be issued.

## Cancellation of Enrolment

Ara may cancel your enrolment as a learner on any of the Education Act (1989) grounds:

- The person is not of good character.
- The person has been guilty of misconduct or a breach of discipline.
- The person is enrolled for full-time instruction in another institution or in a school.
- The person has made insufficient progress in the person’s study or training after a reasonable trial at the institution or at another institution.

The decision to cancel or refuse an enrolment may be made only by the Operations Leader or nominee.

Failure to meet the terms and conditions of Academic Contract and/or probation may lead to exclusion.

When a cancellation is being considered, the Portfolio Manager must invite you to an interview.

## Refusal of Future Enrolment

Any person may, for good reason and on good evidence, be refused enrolment at Ara generally or in a particular programme or course only by the Operations Leader or by his or her nominee under specific delegation.

Enrolment may be refused on any of the Education Act (1989) grounds.

Failure to meet the terms and conditions of probation may lead to exclusion.

The Portfolio Manager must forward a recommendation to the Operations Leader that the person's application(s) to enrol be refused. The recommendation must state which of the Education Act (1989) grounds is the basis of the recommendation and must include the supporting evidence.

For more information about Exclusion, including Appeal Rights and Other Rights, see [Exclusion](#) - scroll down and find **3.4 Refusal of Enrolment**.

## Copyright and Ara Learners

Copyright legislation exists to protect copyright owners from unauthorised copying of their work (literary, dramatic, musical and artistic), and provides them with exclusive rights to how their work is used.

During your study with us we will endeavour to educate you on copyright use, including referencing, approved copying, and proper use of electronic material and downloadable music.

Infringement of copyright regulations may result in civil or criminal prosecution against you, as the learner, and/or Ara. Infringement by you, as a learner, may also be considered academic misconduct and result in penalties.

For more information about Copyright, see [Copyright](#).

.

# Kā tū whare me kā rauemi

## Facilities and resources



## Kā tū whare - Facilities

### Faculty related Health and Safety

Please refer to the [Learner Information Handbook](#) for general Health and Safety information and evacuation details. In an emergency advise a staff member, and if no one is available phone 111.

Refer to your tutors and laboratory managers for instructions and specific Health & Safety information related to laboratory and field activities.

## Kā rauemi - Resources

### Noticeboards

<b>City Campus</b>	Learner information, including employment opportunities, will be posted on the noticeboards in Paxus House and/or in clinic rooms
<b>Timaru Campus</b>	Learner information, including employment opportunities, will be posted on the noticeboards in clinic rooms

### Lockers - Christchurch

There are a limited number of lockers available that are shared with other users on a daily basis.





Should you wish to use a locker you must supply your own lock. It is recommended you use a combination lock to remove the stress of lost or forgotten keys.

# First Day Information

E te ringa kua toro mai ki ngā kete o te wānanga tēnei a Ara e mihi ana.

Kia ora. Welcome to Ara. Our staff are looking forward to meeting you and working with you throughout your programme, ensuring your experience within the faculty is challenging, rewarding and enjoyable.

Here is some important information about your programme. We advise that you keep this information in a safe place, as you may need to refer to it later.

<h2>Study Information</h2> <p>NZ2201 New Zealand Certificate in Salon Skills (Introductory) (Dual Enrolment) Level: 2, Duration: Part-Time 1-year, Total Credits: 60 Study location: Christchurch</p> <p><b>Enrolment period: 20 July – 27 November 2026</b></p> <p>Three days per week on a Monday, Tuesday and Wednesday</p> <table><tr><td> <b>Semester 2</b></td><td><b>Term break</b></td></tr><tr><td>20 July – 27 November</td><td>28 September – 9 October</td></tr></table>	 <b>Semester 2</b>	<b>Term break</b>	20 July – 27 November	28 September – 9 October	<h2>Logins</h2> <p>If you need assistance with logins etc, contact ICT <a href="mailto:ictservice@ara.ac.nz">ictservice@ara.ac.nz</a> or call 03 940 8800.</p> <h2>MyAra</h2> <p>With MyAra you can access everything you need in one place and with notifications to keep you updated. To access MyAra (from 21 days prior to your course beginning), you must have a current Ara network login and password (you can use <a href="#">Ara Self-Service Password Reset</a> to activate your network account). When you first login to MyAra, it will prompt you to change your password. After that, it will ask you to enter more information such as your mobile phone number, personal email address or security questions. This information will be used to reset your password if you forget it.</p> <p>Key information can be found on the MyAra app and website <a href="#">MyAra</a>, including:</p> <ul style="list-style-type: none"><li>• Learner email</li><li>• Your timetable, calendar, and attendance</li><li>• Your learner portal</li><li>• Moodle (from 14 days prior to your course beginning and you cannot login to Moodle until you have changed your password)</li></ul> <p><b>If you do not intend to study with us, let us know as soon as possible so you can be withdrawn and avoid any impact on future study.</b></p>
 <b>Semester 2</b>	<b>Term break</b>				
20 July – 27 November	28 September – 9 October				
<h2>Orientation</h2> <p>Orientation is compulsory for all learners. You will meet staff and receive important information relevant to your studies, including logging into the Ara network.</p> <p>Please feel free to contact us if you have any queries related to the programme prior to this first session.</p> <p><b>When and where?</b></p> <p> <b>Programme orientation</b> 9.30am, Monday 20 July 2026 Paxus House, 144 High St, CBD, Christchurch</p>	<h2>Contact Us</h2> <p>To contact the Admissions and Enrolments staff, visit 'Admissions and Enrolments' on campus: Monday – Friday, 8am – 4.30pm 0800 24 24 76   <a href="mailto:info@ara.ac.nz">info@ara.ac.nz</a></p>				
<h3>What we'll cover</h3> <ul style="list-style-type: none"><li>• Welcome</li><li>• Programme overview</li><li>• Course details</li><li>• Campus familiarisation</li><li>• Policies and procedures</li><li>• ICT access</li><li>• Timetable</li></ul> <h3>What to wear/bring</h3> <ul style="list-style-type: none"><li>• Plain black top and pants</li><li>• Pen, paper and highlighters</li></ul>					

**Disclaimer:**

All care and attention has been given to ensure the information in this document is accurate at the time of publishing. Ara does not take responsibility for any loss or harm incurred as a result of reliance upon any information which is incorrect or out of date. This document was last updated on 3 July 2026.



---

## Want to find out more?

For details and information about making the most of your study at Ara, visit [www.myara.ac.nz](http://www.myara.ac.nz) or get the **downloadable app**.

Get in touch if you have any questions: **0800 24 24 76** | [info@ara.ac.nz](mailto:info@ara.ac.nz)