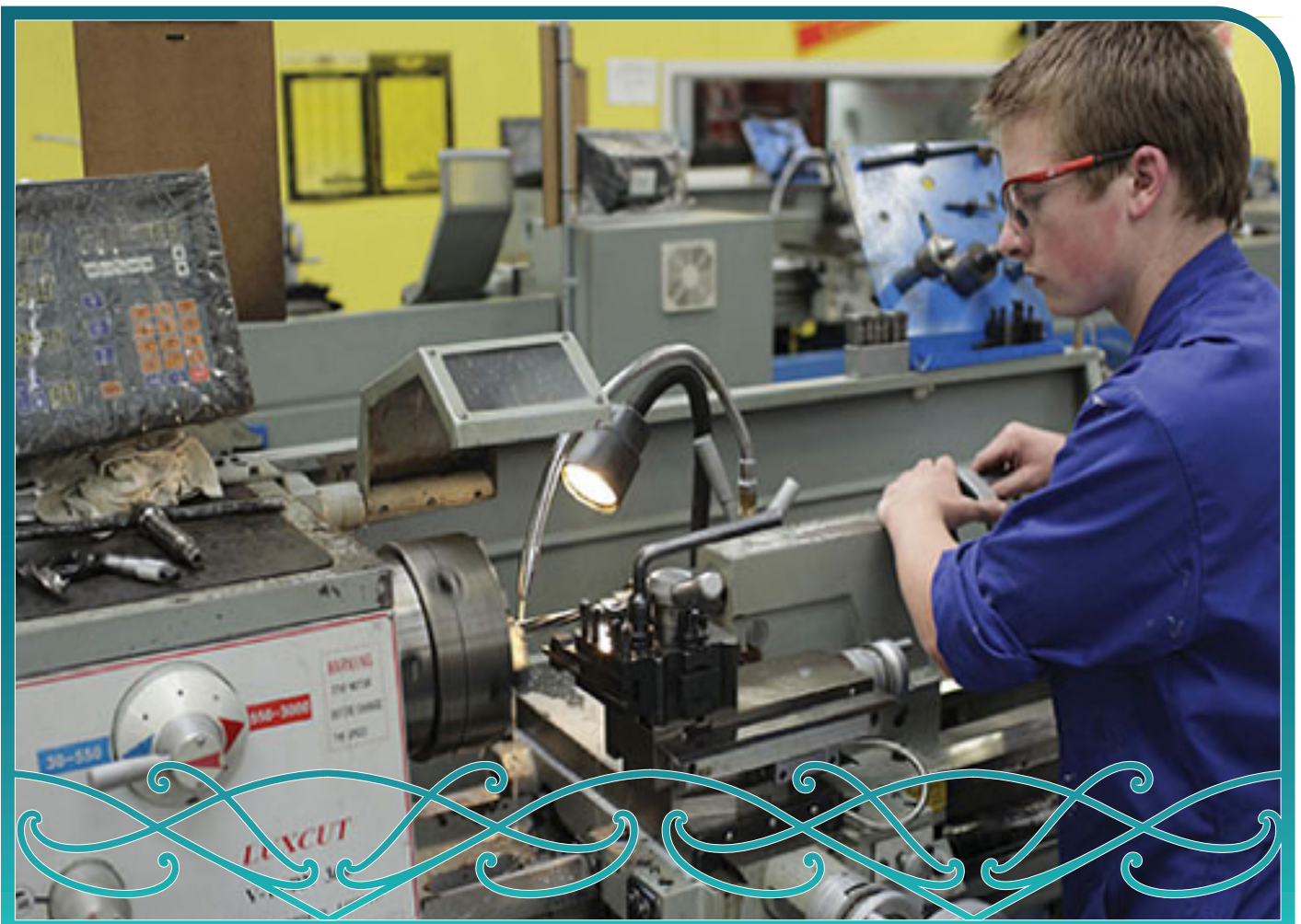


2026
Programme Handbook

NZ2715 New Zealand Certificate in Mechanical Engineering (Level 3)



Rāraki Upoko – Contents

Nau mai ki Ara - Welcome to Ara	4
Tō Rangi Tuatahi - Your First Day	6
Where to come on your first day 2026	6
Equipment Requirements	6
Timetable information	7
How to find your way around	7
Korero Nui – Important Information	8
Attendance	8
Learner Information Handbook	8
Attendance	8
Non-Engagement	9
Drugs and Alcohol	10
Artificial Intelligence (AI) Tools	10
Kā Raki whakahirahira - Important Dates	11
Kā whakapātaka - Contact Details	13
Taipitopito akoraka - Programme Details	16
Mahere Ako- Programme Structure	17
Kā tika me kā kaweka o te tauira - Learner Responsibilities and Rights	18
Unacceptable Behaviour for Learners, or Visitors at Ara	20
Learner Behaviour in Class / Classroom Maintenance	21
Kā Taunakitaka Mōu – Support for You	22
Quick reference – Where to find help if you have feedback or want to raise an issue	22
Kā Aromatawai - Assessments	24
Assessment Information	24
Academic Integrity	24
Submitting Your Work	25
The Grade Scale	27
Kā tikaka aromatawai - Assessment Regulations	28
Regulations Flowchart	28
Which Form Do I Use?	28
Extensions	30
Late Submissions	30



Second Results (course level)	30
Assessment in Te Reo Māori	30
Marks Carried Forward	31
Supported Assessment	31
Recognising Prior Knowledge and Skills	31
Alternative Arrangements.....	32
Aegrotat	32
Reconsideration of Assessment Decisions.....	32
Reconsideration of a Course Final Grade.....	32
Appeal of Reconsideration Decision	32
Conceded Pass.....	33
Kā putaka me te Whakapōtaetaka - Results & Graduation	34
Accessing Your Results.....	34
Academic Transcripts	34
Access to marked assessments.....	34
Receiving Your Qualification.....	35
Graduation	35
Kā ture me kā tikaka - Policies & Procedures	36
Academic Policies	36
Academic Support and Progression	36
Formal Academic Contract.....	36
Academic Misconduct	37
Plagiarism	37
Use of Artificial Intelligence (AI) Tools.....	37
Cheating.....	37
Dishonest Academic Practice	38
Educative Processes	38
Learner Behaviour Management	38
Penalties	38
Probation.....	39
Exclusion.....	39
Suspension	39
Cancellation of Enrolment	39
Refusal of Future Enrolment	40
Copyright and Ara Learners.....	40

Kā tū whare - Facilities	43
Faculty related Health & Safety	43
Personal Protective Equipment (PPE)	43
After Hours Access.....	44
Appendix One	45
Equipment Requirements.....	45

Nau mai ki Ara - Welcome to Ara

Kia ora

Welcome to the Faculty of Applied Technology, Ara Institute of Canterbury, and congratulations on being accepted into one of our training programmes. I trust you will find your time here as a learner rewarding and I look forward to seeing you progress through your study.

The Trades Campuses have a long tradition of providing quality trades training to support a range of industries regionally and nationally. Our staff are experts in their respective trades and are committed to providing you with the best possible opportunities to be successful in the pursuit of your qualifications. They will provide sound guidance, assistance and support as you work towards your goals.

With strong support from industry partners and employers in the region, there are great opportunities for you to transition from trade training into employment. Now more than ever, you can play a vital role in the future of our region and take advantage of the opportunities at hand.

As a learner you will have access to the full range of Ara facilities and services that are aimed at supporting your achievement. I encourage you to make the most of the opportunities offered to you and I am confident that your commitment to your studies will ensure your success and lead to a fulfilling career.

I wish you all the best with your programme of study.



Peter Sauer
Dean of Faculty
Faculty of Applied Technology
2026

Kia rite ki te ako Getting ready for study



Tō Rangi Tuatahi - Your First Day

Are you ready for your first day of class? Check out your start date and where you need to be.

You can also find useful information on [MyAra](#). MyAra (from 21 days prior to your course beginning), you must have a current Ara network login and password (you can use Ara Self-Service Password Reset to activate your network account).

Where to come on your first day 2026

CHRISTCHURCH

On your first day please come to:

Venue: Ara Woolston Campus – Student Services Building

Time: 8am

TIMARU

On your first day please come to:

Venue: Ara Campus Timaru – Student Central

Time: 8am

On your first day (orientation), you will be introduced to your tutors and new classmates, be given an overview of this programme, including:

- Welcome
- Programme overview.
- Course details
- Campus familiarisation
- Policies and procedures
- ICT access
- Programme handbook and timetable.

Returning students

Please check your [timetable](#) for your first class details.

Equipment Requirements

- Please see [Appendix One](#) for the equipment requirements.

What you will need

- Sensible, work appropriate clothing and sturdy lace up shoes
- Pen and paper
- Windows based laptop or tablet

Logins

If you need assistance with logins etc, contact ICT ictservicedesk@ara.ac.nz or call 03 940 8800.

Timetable information

All timetables are available on [MyAra](#).

How to find your way around

Campus maps can be found [here](#).

Parking and bus information

Campuses (excluding Manawa) have parking available. Payment and parking stickers may be required. Learn more about parking and biking. Or find out about bus services [here](#).

Ara Whakatau, your official welcome

You are warmly invited to attend the official welcome to Ara for all learners, staff and whānau (family). The whakatau is a welcoming ceremony, similar to a pōwhiri, involving mihimihi (speeches), waiata (song) and will conclude with kai timotimo (light refreshments).

Click [here](#) to find out when the whakatau will be.

International learners

You will be invited to an international orientation as well as the programme orientation. You should attend both.

Korero Nui – Important Information

Learner Information Handbook

We recommend that you read your Programme handbook in conjunction with the Learner Information Handbook (also available on MyAra) which has more detailed information about support and services available to learners at Ara.

Attendance

Experience has shown that if you attend regularly and participate in the class activities and assessments you are more likely to succeed. Full attendance and commitment are encouraged. You are expected to be punctual and must comply with the various behaviour and safety requirements of classrooms, workshops and labs.

For an International learner satisfactory progress is defined as 100% attendance and successful completion of 75% or more of your courses.

**Let Ara know when you are absent from classes or if you are sick
Contact your tutor**

Learner Information Handbook

We recommend that you read your Programme handbook in conjunction with the [Learner Information Handbook](#) (also available on MyAra) which has more detailed information about support and services available to learners at Ara.

Attendance

Experience has shown that if you attend regularly and participate in the class activities and assessments you are more likely to succeed. Full attendance and commitment are encouraged. You are expected to be punctual and must comply with the various behaviour and safety requirements of classrooms, workshops and labs.

For an International learner satisfactory progress is defined as 100% attendance and successful completion of 75% or more of your courses.

**Let Ara know when you are absent from classes or if you are sick.
Contact your tutor or advise the faculty by emailing @ara.ac.nz**

Non-Engagement

Ara has processes to deal with learners who formally enrol here but do not “engage” with their studies. That is, if you do not attend and/or participate and/or submit assignments and/or sit assessments or only attend briefly or spasmodically and/or do not engage significantly.

Our faculty process follows these steps if you are a no-show at the start of teaching:

- 1** We will attempt to contact you 3 times and if we are not successful we will withdraw you (1) within 3 days if there is a waitlist of other learners who want to enrol, or (2) within 10% of the length of your enrolment (often 1 – 2 weeks)

- 2** You will receive an email, text or phone call asking why you have not been attending

- 3** There will be no academic or financial penalty from Ara, but you could be overpaid by StudyLink

Our faculty process follows these steps for disengaged learners:

- 1** The registers are checked and if your engagement and attendance is a concern, we will talk with you

- 2** You will receive an email or phone call asking why you have not been attending. You may receive a non-engagement letter

- 3** We will attempt to contact you 3 times

- 4** You may be placed on a Formal Academic Contract or withdrawn

- 5** You will receive a WD grade (after 10% of the duration of the course) or a DNC grade (after 80% of the duration of the course)

If you are struggling with attendance, we fully encourage you to talk this over as soon as possible with your tutor.

Drugs and Alcohol

In line with the expectations of many workplaces, Ara has procedures to ensure the health and safety of all learners, staff and visitors, while undertaking Ara activities.

Ara has **zero tolerance** for the misuse or abuse of alcohol and/or illegal/controlled drugs, possession and/or use of illegal/controlled drugs/substances, or intoxication on all campuses/learning sites.

Many learning activities involve high-risk situations where clear thinking, decision-making, and machinery operation need to be conducted safely. These activities cannot be compromised.

You can download the policy from [CPP506 Drugs & Alcohol Policy](#).

Artificial Intelligence (AI) Tools

When submitting work for assessment, you must adhere to Ara's Assessment and Academic Misconduct policies and not present AI such as ChatGPT as your own work. Learning Services have resources to help you learn to paraphrase or reference another person's work to avoid academic misconduct.

For more detail, please read the [Kā ture me kā tikaka - Policies & Procedures](#) section of this handbook.

Kā Raki whakahirahira - Important Dates

TERM DATES

WOOLSTON

NZ2715-26-FY-FW1

Monday, Tuesday, Wednesday

Course start and finish date 09 February 2026 – 11 November 2026

Term dates 09 February – 01 April,
20 April – 01 July
20 July – 11 November

NZ2715-26-FY-FW2

Wednesdays, Thursdays, Fridays

Course start and finish date 11 February 2026 – 13 November 2026

Term dates 11 February – 03 April,
22 April – 03 July
22 July – 13 November

NZ2715-26-FY-FW3

Tuesdays, Wednesdays, Thursday

Course start and finish dates 24 February 2026 – 26 November 2026

Term dates 24 February – 02 April
21 April – 02 July
21 July – 26 November

NZ2715-26-FY-AW1

Monday, Tuesday, Wednesday

Course start and finish dates 03 August 2026 – 05 May 2027

Term dates 03 August – 30 September
12 October – 16 December
11 January 2027 – 17 March
05 April – 05 May

TIMARU

NZ2715-26-FY-FT1 Mondays, Tuesdays, Wednesdays

Course start and finish dates 09 February 2026 – 11 November 2026

Term dates 09 February – 01 April,
20 April – 01 July
20 July – 11 November

Public Holidays

Waitangi Day Friday 6 February

Good Friday Friday 3 April

Easter Monday Monday 6 April

Easter Tuesday Tuesday 7 April

Anzac Day Monday 27 April (observed)

King's Birthday Monday 1 June

Matariki Friday 10 July

South Canterbury Anniversary Monday 22 September

Labour Day Monday 26 October

Canterbury Anniversary Friday 13 November

Kā whakapātaka - Contact Details

Key Staff

Peter Sauer

Dean of Faculty

Phone: (03) 940 6016

Room: V123

Peter.Sauer@ara.ac.nz



Marc Wüst

Portfolio Manager

Auto, Engineering and Plumbing Trades

Phone (03) 940 8443

Room: V105a

Marc.Wust@ara.ac.nz



Teaching Staff

Name/teaching area	Room	Phone	Email
Woolston Campus			
Juan Carr	V109	(03) 940 6104	Juan.Carr@ara.ac.nz
Taylor Byrne	V109	(03) 940 6045	Taylor.Byrne@ara.ac.nz
Jason Orchard	V109	(03) 940 8395	Jason.Orchard@ara.ac.nz
Rodger Van Berkel	V109	-	Roger.vanberkel@ara.ac.nz
Ken Evans	V109	(03) 940 6017	Ken.Evans@ara.ac.nz
Mark Kingston	V109	(03) 940 6028	Mark.Kingston@ara.ac.nz
Mark McIntosh	V109	(03) 940 8788	Mark.McIntosh@ara.ac.nz
James Rowley	V109	-	James.Rowley@ara.ac.nz
Peter Woods	V109	(03) 940 6032	Peter.Woods@ara.ac.nz

Timaru Campus

Wayne Anderson	D Block	(03) 687 1856	Wayne.Anderson@ara.ac.nz
----------------	---------	---------------	--

Peter Briton	D Block	(03) 687 1856	Peter.Briton@ara.ac.nz
--------------	---------	---------------	--

John Edwards	C Block	(03) 687 1997	John.Edwards@ara.ac.nz
--------------	---------	---------------	--

Ivan Embling	D Block	(03) 687 1856	Ivan.Embling@ara.ac.nz
--------------	---------	---------------	--

Tō Akoako Your study



Taipitopito akoraka - Programme Details

Programme Aim

The aim of the programme is to provide the mechanical engineering, construction, manufacturing, and fabrication industries with operators or trade assistants.

Graduate Profile

You will be able to work safely to a professional standard in the engineering industries in the following specific skill areas:

- Work safely, applying an understanding of relevant Health and Safety requirements and safety culture, when carrying out engineering tasks.
- Apply basic trade related numeracy, literacy, and visualisation skills to perform engineering tasks.
- Perform a defined range of engineering tasks according to instructions using relevant materials, tools, and equipment.
- Set up and carry out a single process engineering job according to instructions.
- Apply an understanding of effective and efficient processes and principles to the engineering jobs being undertaken.
- Take responsibility for the appropriate quality of your own engineering work and make corrections as required.
- Participate and communicate effectively within an engineering team.

Programme Regulations

The New Zealand Certificate in Mechanical Engineering (Level 3) is a one-year full time equivalent programme of study requiring the successful completion of 120 course credits.

The maximum period of time to complete the programme is three years. Any extension to this period would require a written application from the Portfolio Manager or delegate to the faculty Group.

The programme comprises 120 compulsory course credits, with a minimum of 90 credits at Level 3.

A learner showing insufficient academic progress will be advised in writing of the student support services available, and their academic performance (including

class attendance) will be monitored by the Programme Manager. Should performance not improve, the Programme Manager will discuss with the Portfolio Manager the benefit of placing the learner on a Formal Academic Contract.

Mahere Ako- Programme Structure

Programme Matrix

Use the following table as a guide to the courses in your programme. You can find out how many credits each course is worth, and how many credits and courses you need to do to complete your study.

Code	Course Title	Level	Credits	Course Factor
MECH3028	Engineering Health and Safety	3	10	0.1250
MECH3029	Engineering Calculations and Drawing	3	15	0.1250
MECH3030	Mechanical Engineering Workshop Skills	3	15	0.1250
MECH3031	Engineering Machining	3	20	0.1250
MECH3032	Engineering Fabrication	3	20	0.1250
MECH3033	Welding	3	20	0.1250
MECH3034	Mechanical Engineering Processes and Quality	3	10	0.1250
MECH3046	Mechanical Engineering Communication	3	10	0.1250
Programme Total			120	1.0000

Our Access to Your Work

We may contact you to discuss the right to copy, reproduce, and use your learner work for promotional and education purposes for Ara.

Kā tika me kā kaweka o te tauira - Learner Responsibilities and Rights

Learner Responsibilities and Rights

The Ara community consists of a diverse range of people and cultures, and we respect all members of our community. Our aim is to have a community where learners respect themselves and others, a community where healthy social interactions and academic pursuits are expected. To create and maintain the best possible teaching and learning environment, you are protected by basic rights and are expected to respect the rights and responsibilities of others.

Useful Contacts:

Independent Student Advocate: Duncan Dunbar

Email: duncan.dunbar@ara.ac.nz | Mobile: 027 273 6246

Email: studentvoice@ara.ac.nz

Your Responsibilities as a Learner

As a learner here, Ara expects you to:

Behave safely

- Take care when using equipment and facilities.
- Wear suitable clothing.
- Follow health and safety guidelines and instructions.
- Not endanger yourself or others.
- Follow relevant professional guidelines.
- Ensure you are not intoxicated or under the influence of drugs on Ara premises or when involved in Ara related activities both formal and informal, with your programme, field trips, internships, work experience, etc.

Respect others

- Be sensitive to personal, social, and cultural differences.
- Respect the needs, rights, and freedoms of others.
- Help to uphold the integrity of Ara qualifications by discouraging/reporting dishonest practices.

Observe Ara rules

- Behave appropriately for a tertiary education environment.
- Genuinely attempt to meet all course requirements including financial obligations.
- Comply with visa requirements.
- Be honest when completing assignments/other assessments.
- Comply with requirements of programme handbooks.
- Follow Ara policies and regulations (refer: <https://www.ara.ac.nz/about-us/policies>).

Your Rights as a Learner

Ara will protect your right to fairness. You have a right to:

Fairness

- Open and accurate information.
- Fair evaluation and assessment.
- Have any problems handled as quickly as is practical and consistent with 'natural justice'.
- Personal privacy.
- Support, representation, and advocacy.

Ara Respects your right to:

- Academic freedom, defined as 'freedom, within the law, to question and test received wisdom, to put forward new ideas and to state controversial or unpopular opinions.' (Education and Training Act 2020).
- Freedom from any form of harassment, bullying, or unjust discrimination.
- Respect for personal, social, and cultural differences.
- Representation in the development, implementation, and review of policies.

Ara will protect your right to Standards:

- Study programmes that meet internal and external standards for approval and registration.
- To have competent and effective teachers.
- Appropriate support services delivered in a professional manner.
- Facilities and resources that meet or exceed Health & Safety legislation.

Concerns / Complaints:

Your rights will be upheld by Ara management. If you think they have been infringed, in the first instance please contact your course tutor. If it is not appropriate to contact your tutor regarding your complaint, or the matter has

not been resolved, please contact your Portfolio Manager/Programme Manager or Student Advocate and/or the Student Life Team.

Unacceptable Behaviour for Learners, or Visitors at Ara

The following are examples of behaviour which are not acceptable for anyone (learners, or visitors), at Ara or involved in Ara related activities:

- Breaking any NZ law (e.g., assault, theft).
- Any form of cheating (including plagiarism and other dishonest practices).
- Misuse of technology, software, hardware, or communication systems provided by Ara (refer Ara Code of Conduct for ICT Users in particular).
- Any form of harassment, bullying, or unjust discrimination including social media.
- Unacceptable sexual behaviour (e.g., sexual harassment, accessing pornography/other restricted material).
- Misuse of alcohol, drugs or other substances affecting behaviour, health, or safety.
- Smoking (including vaping) on Ara campuses. (Ara is a smoke free campus).
- Violence or threats of violence.
- Vandalism or other abuse of facilities and buildings.
- Disruptive behaviour in class (e.g., arriving late, use of any electronic device, interfering with the learning of other individuals).
- Inductions (informal) are not permitted at Ōtautahi House or on other Ara premises and are strongly and expressly discouraged by Ara.
- The above is not an exhaustive list of unacceptable behaviours. Where appropriate, Ara reserves the right to contact or report to external authorities.

Academic staff have the responsibility to maintain a safe and effective learning environment.

They may ask you to leave the class if your behaviour indicates limited ability to be safe, disturbance to others learning, or puts others at risk.

Ara takes this code of conduct seriously. Your marks, reports, and references may include an assessment of your behaviour, as well as your educational achievement. Serious infringement may lead to probation, suspension, or cancellation of a current enrolment and/or refusal of a future enrolment (see relevant policies). This may be referred to an appropriate external authority e.g., NZ Police.

Learner Behaviour in Class / Classroom Maintenance

Be respectful of other learners and the classroom environment, following classroom specific rules and requirements. To avoid any distractions, you must ensure any electronic device you have on you/with you is diverted, not set to ring, or switched off. Both staff and students have a responsibility to ensure this happens.

Dress Code

There is no written dress code, but you are expected to attend classes dressed in a way which is generally acceptable. However, you're expected to be "dressed for the occasion" when going on a site visit or undertaking a Cooperative Education Project. You may be prevented from going on site visits if the staff member is of the opinion that you're not dressed for the occasion. In specific courses, a "dress code" and standard is required. These will be detailed in the Programme Handbook and Course Outline.

Kā Taunakitaka Mōu – Support for You

Quick reference – Where to find help if you have feedback or want to raise an issue

The Education (Pastoral Care of Tertiary and International Learners) Code of Practice sets out the expectations that tertiary education organisations need to consider how their overall systems and resources support learners' wellbeing and safety.

For more detailed information on the code, and support areas listed below, please refer to the [Learner Information Handbook](#) on MyAra

Support Area	Details	People	Links
Faculty Staff	This team are your first port of call for issues impacting your ability to study	Tutor Programme Leader Programme Manager Portfolio Manager	
Student Reps	Student reps are invited to attend student rep meetings within your faculty where they can raise issues on your behalf	Student Voice Posters of your student reps are displayed in your faculty	Student Voice
Student Services	Ara offers a wide range of student services	Student Advisors Health Centre Student Voice	Student Support
Te Pae Ora	A wellbeing hub for ākonga		Te Pae Ora Te Pūkenga
Independent Student Advocate	Student Advocacy is available to assist you if you are facing difficulties within or beyond Ara	Duncan Dunbar 027 273 6246 Duncan.Dunbar@ara.ac.nz X106 (Rakaia Centre)	Student Advocacy

Support Area	Details	People	Links
Complaints Process	that could affect your study		
	Ara has a process to support you and respond if you have a concern or complaint about a course, tutor, or another aspect of your programme	Complaints Co-ordinator	CPP117-Raising-problems-or-complaints CPP117a-Raising-problems-or-complaints-form
Safeplace	Safeplace is the tool we use to report risks, accidents and other incidents	Safety & Wellbeing Co-ordinator Safety & Wellbeing Business Partner	SafePlace FAQ for Learners
Important Policies	All Ara Corporate and Academic Policies can be found at Ara Policy Library		Student Rights and Responsibilities Addressing Bullying, Harassment and Discrimination

Kā Aromatawai - Assessments

Assessment Information

At the start of each course, you will be given workbooks and/or training manuals and other handouts to help you through your programme of learning.

Before each assessment you will be given the following information:

- The number, type, and due dates for all assessments. This includes tests and assignments.
- The weighting of each assessment in your course that contributes to your final grade, if applicable.
- The assessment policy for resits, second results and alternative assessments, if they are different from the policies in this document.
- The time frame for getting your marked assessments back from tutors, if they are different from those stated in this document.
- The penalties for handing assessments in late, if they are different from those stated in this document. These may be different for each course.

Assessment Types

Formative assessment Verbal and written feedback that takes place throughout classes and the programme.

Summative assessment Assessments throughout the year that are based on learning outcomes for the course and determine how well you have achieved each outcome. You are given grades and written feedback. These assessments may include practical tests and projects.

The contents of the course work will be explained by the tutor for each course. If at any point your tutor is concerned about your progress, they will let you know.

Academic Integrity

Ara requires ākongā to be honest and act with integrity in their learning and assessments. All ākongā are required to:

- Present their own original work for assessment.

- Acknowledge contributions from other sources by using correct APA referencing format; this includes direct copying, paraphrasing, summarising, and the rearranging of, another person's words or idea/s.
- Not cheat in tests or examinations.
- Ensure they follow all instructions and the correct procedures.
- Not collude on assessments with other ākonga.
- Not over- or misrepresent the individual contributions of members of any group assignment .
- Not knowingly help others to cheat.
- Not present another person's assessment as their own (**this includes purchased and AI-generated assessments**).
- Not act or behave in a way that prevents others from completing their assessments.
- Keep written and electronic work secure to prevent others from accessing and copying work.

By enrolling at Ara, you agree to your work being reviewed by various means to confirm an assessment is your own work. This includes the use of similarity detection software.

Any breaches of academic integrity follow the process set out in the academic integrity procedures. For more detailed information, please refer to the [Academic Integrity Policy](#).

Submitting Your Work

Your tutors will let you know if they have guidelines for presenting your assessments and how to submit your work. Use a computer to create your assessments.

You may be required to submit your work manually or electronically. If you submit your work electronically, keep a copy until your official results are published at the end of the semester. If you have any questions, contact your Programme Leader.

Note: Ara uses as part of its assessment processes electronic plagiarism detection. You will, from time to time, be required to submit assessments for scanning. Electronic copies of assessments must be retained by you until the official results are published after the end of semester or year.

Quality Assurance

Your assessments and exam scripts may be used for internal and external moderation, monitoring, programme reviews, aegrotats (if available), and the resolution of academic appeals and complaints. This helps Ara meet internal and external academic quality assurance requirements. If your assessments are used this way, before they are used, any information that could reasonably be expected to identify you will be removed.

The Grade Scale

The following grade scale (TP Competency) will be used for all courses on the programmes unless advised otherwise in the course descriptor:

Grade	Result	Definition
A	Achieved	Pass
N	Not Achieved	Not passed/No credit

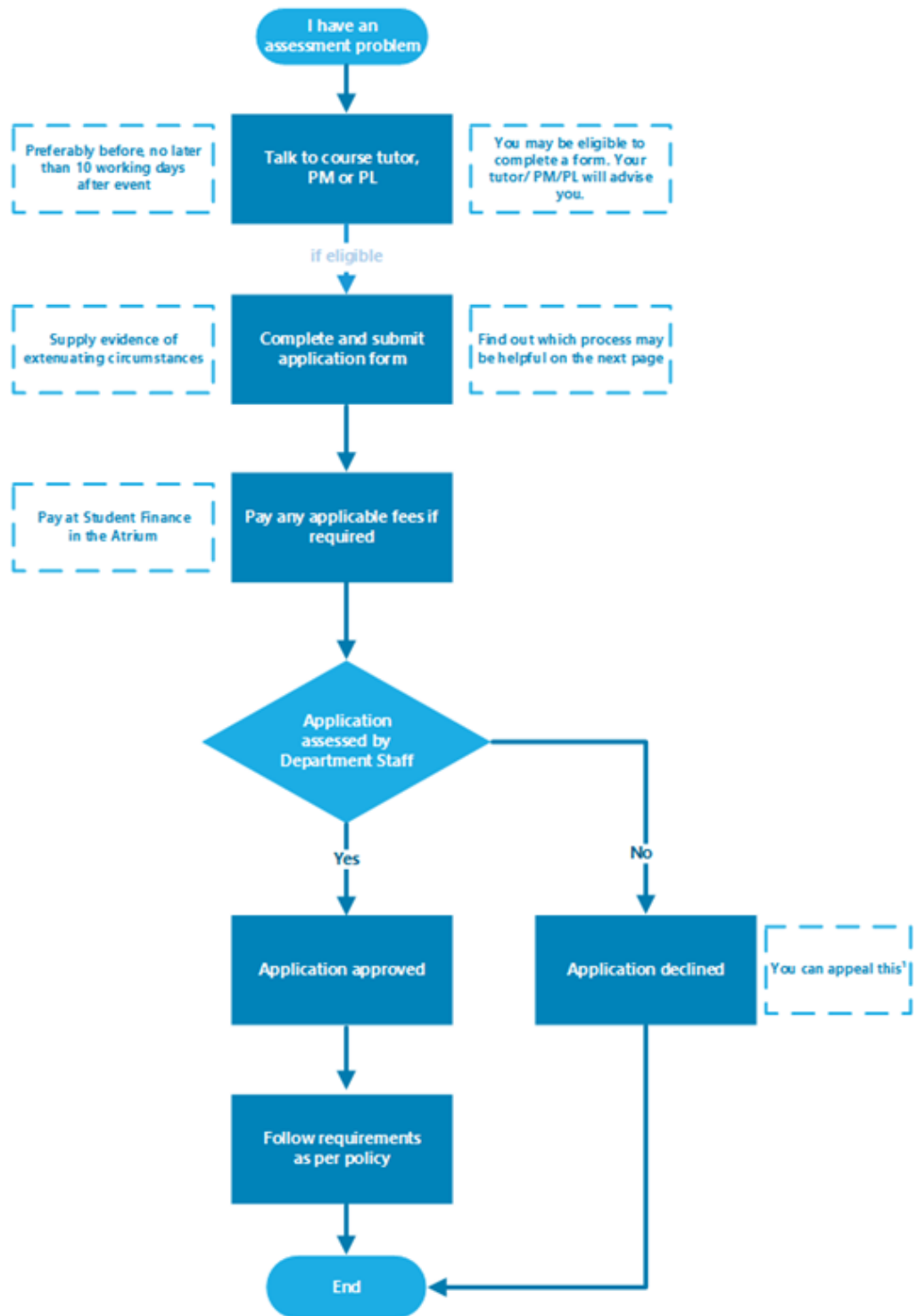
Other Grades

Other grades that may be awarded for particular circumstances in competency-based courses include:

Course result	Grade	Description
P	Pass	Ungraded Pass usually through prior learning or where a graded level of achievement cannot be applied. Unit standards recognised through prior learning are awarded a CT grade.
Unfinished at time of reporting	DNC	Did not complete course requirements or formal withdrawal after 80% of the duration of the course or informal withdrawal at any time.
Withdrawn	WD	Formal withdrawal within the non-academic penalty period (10% of the duration of the course).
Grade Pending Completion	GP	Grade pending completion beyond course end date with approved extension.
Attendance Met	AO	Met course attendance requirements.

Kā tikaka aromatawai - Assessment Regulations

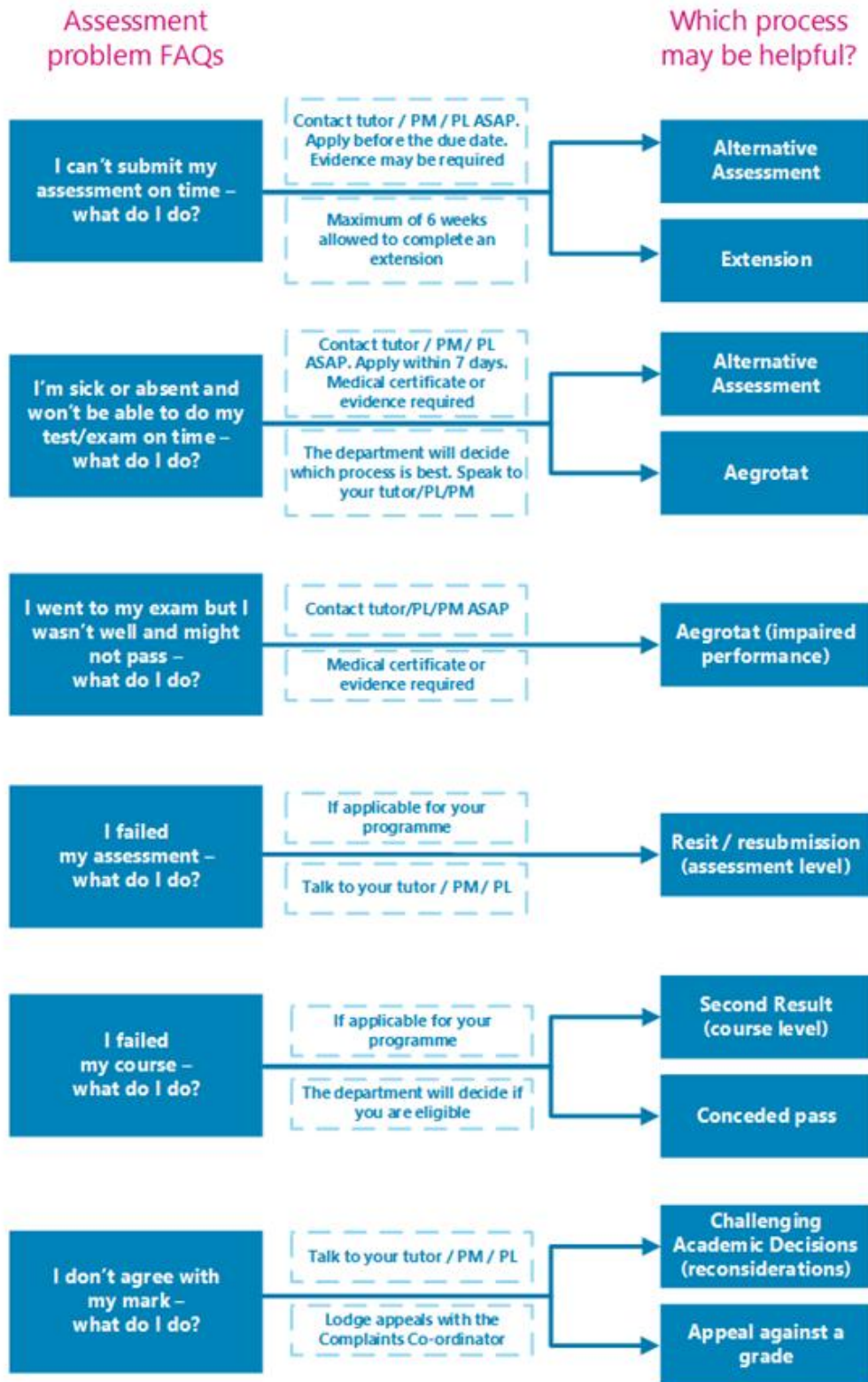
Regulations Flowchart



*The student lodges the appeal in writing with the Complaints Co-ordinator with a copy to the Head of Department

Which Form Do I Use?

* Always speak to your tutor, Programme Manager (PM) or Programme Leader (PL) to see if you are eligible



You must attempt and submit all summative assessment items within the timeframe or by due date indicated in the course outline **unless an extension has been granted.**

Extensions

If you anticipate difficulty in submitting assessments by the due time and date you may be able to request an extension.

For information about how to apply for an extension of time, see [Assessment Policy](#) - scroll down and find **3.14 Extensions**. You can download the form from [Application for Extension of Time](#).

Late Submissions

Late submissions do not have to be accepted for marking, accepting a late submission is at the discretion of the Assessor and Programme Manager.

Resits or resubmission of assessment tasks

If you have submitted and failed an assessment task you may be able to apply for a resubmission resit

For information about how to apply for a resit or resubmission, see [Assessment Policy](#) - scroll down and find **3.15 Resits and Resubmissions**. You can download the form from [Application for Resit or Resubmission](#).

Second Results (course level)

If you receive a fail grade in a course, you may be able to apply for a reassessment of the course.

For information about how to apply for a second result, see [Assessment Policy](#) - scroll down and find **3.16 Second Results**. You can download the form from [Application for Second Result](#).

Assessment in Te Reo Māori

You can request to have your assessments conducted in Te Reo Māori, except where the task requires English language or other language capability. Other exceptions may apply.

For information about how to apply for assessment in Māori, see [Assessment Policy](#) - scroll down and find **3.4 Assessment in Te Reo Māori**.

Marks Carried Forward

You may be able to apply to carry marks forward for completed assessments to the next available occurrence of the course and not redo those assessments.

For information about how to apply for marks carried forward, see [Assessment Policy](#) - scroll down and find **3.18 Marks Carried Forward**. You can download the form from [Marks Carried Forward Application form](#).

Supported Assessment

You may be able to apply for special assistance in order to undertake an assessment.

For more information about how to apply for additional assessment arrangements for disabled learners, see [Assessment Policy](#) - scroll down and find **3.19 Procedures for additional assessment arrangements for disabled learners**.

Recognising Prior Knowledge and Skills

If you believe that a qualification, course or unit standard you have previously completed a recognised educational institution, or work/life experience, may be relevant to the qualification you are studying, you could apply for recognition of your prior knowledge and skills.

The previous grade is carried forward for any Cross Credit or Credit Transfer, and the Pass (P) grade given where a standard grade cannot be stated.

For information about how to apply for credit recognition, see [Credit Recognition](#). You can download the form from [Credit Recognition Application](#).

Alternative Arrangements

If you are unable to sit a test or exam on the scheduled date, or complete an assessment on the due date, you may be able to apply for an alternative assessment

For information about how to apply for an alternative assessment see [Assessment Policy](#) - scroll down and find **3.13 Alternative Assessment Arrangements**. You can download the form from [Application for Alternative Time for Test / Exam](#).

Aegrotat

Aegrotats are not available on this programme.

For information about these regulations, see [Aegrotat Pass Regulations](#).

Reconsideration of Assessment Decisions

If you have reason to believe that the mark for a particular assessment is incorrect you may be able to apply for a reconsideration.

For information about challenging academic decisions (reconsideration), see Challenging Academic Decisions (Reconsideration) [Assessment Policy](#) - scroll down and find **3.20 Reconsiderations and Appeals**. You can also refer to [Reconsiderations and Appeals](#).

Reconsideration of a Course Final Grade

If you have reason to believe that the grade for a particular assessment is incorrect you may be able to apply for a reconsideration.

For information about challenging academic decisions (reconsideration), see Challenging Academic Decisions (Reconsideration) [Assessment Policy](#) - scroll down and find **3.20 Reconsiderations and Appeals**. You can also refer to [Reconsiderations and Appeals](#)

Appeal of Reconsideration Decision

If you consider that the outcome of the reconsideration process is incorrect or unfair, or a reconsideration is not available, you may appeal against the final grade awarded.

For information about challenging academic decisions (reconsideration), see [Assessment Policy](#) - scroll down and find **3.20 Reconsiderations and Appeals**. You can also refer to [Reconsiderations and Appeals](#).

Conceded Pass

Conceded passes are not available on this programme.

For information about conceded passes, see [Assessment Policy](#) - scroll down and find **3.17 Conceded Pass**.

Kā putaka me te Whakapōtaetaka - Results & Graduation

Accessing Your Results

Results of individual assessments will be made available to you within fifteen (15) working days of your assessment due date.

These results may be returned to you in class or online. Final grades for each course will be available online within fifteen (15) working days of the end date of the course from the Student Portal at accessible through [MyAra](#) or through the My Ara app.

Any results displayed publicly will use unique identifiers such as learner ID numbers, not learner names.

Note: Staff members are under no obligation to advise you of your final grade for a course. After you have completed all the assessments in a course, we ask that you allow the staff time to complete the marking. At the end of semester staff members are under great pressure to submit final results to Academic Records so that they can be processed and then made available to all learners as soon as possible.

Academic Transcripts

If you require your results to be printed, visit Central Academic Records (CAR) in A121 (City Campus), or email academic.records@ara.ac.nz to request a transcript.

Access to marked assessments

You are entitled to access your written work submitted for assessment.

Where assessed work is to be returned, time limits for collection will be advised by the faculty.

You may view copies of your examinations, but these are retained by Ara. Any time or access limitations will be advised by the faculty.

Please note that in order to meet internal and external academic quality assurance requirements, student assessments and examination scripts may be used for the purposes of:

- Internal and external moderation.
- Programme review.
- Aegrotats (if available).
- Resolution of academic appeals and complaints.

Assessments used for these purposes will have information, which could reasonably be expected to identify the individual removed before they are copied and used.

Receiving Your Qualification

Once you have successfully completed your approved programme of study you will receive a notification advising you that your certificate is ready and will be posted to you.

Note: Please make sure your address details are up to date when you finish studying. Advise Academic Records if you are updating your address details after you receive the notification, so the correct address is used.

Graduation

We hold several graduation ceremonies.

If you're eligible to graduate, you'll receive a communication from Ara advising you of this. You'll need to complete the online graduation form, by the date indicated, to register for your ceremony.

Note: If you believe you are entitled to graduate and do not hear from Ara please contact the Administrator or Academic Records.

For all information on graduation, including dates, please see [Graduation](#).

Kā ture me kā tikaka - Policies & Procedures

Academic Policies

All policies are accessible on the Ara website [Ara Policy Library](#). Ara provides a student advocacy service.

It is well known that people learn better when they work together, and this is encouraged, but when it comes to assessment, collaboration (working together) is not permitted unless it is a formal part of the assignment set by the tutor(s). Each learner is also responsible for making sure his/her work is not able to be copied by others. Sharing or comparing tests, exams and assessments is prohibited and, if detected, will be treated as “academic misconduct”.

Academic Support and Progression

Support is available if you, as a learner, are having difficulty meeting academic standards or you seek guidance, assistance or support with study related matters.

If you are not achieving satisfactorily, you will receive specifically targeted advice and assistance at an early stage.

Academic staff members will work with you if you are not meeting academic standards to document and implement a plan. This will include identifying and monitoring goals, expected academic progress, timelines and support.

If satisfactory progress is not made then you will be invited to meet with the Portfolio Manager or his/her delegate, who will explain the circumstances, discuss the consequences, and give you the opportunity to present your view of events leading up to the meeting. Depending on the outcome of the meeting, a Formal Academic Contract may be entered into.

Formal Academic Contract

If your progress as a learner in a current course is still considered by tutors to not be satisfactory you will be invited to a meeting and advised in writing by the Portfolio Manager or delegate.

The Formal Academic Contract will record the deficiencies or concerns, the progress which must be met, any assistance available, the time within which

progress or change must be demonstrated, and the method and criteria by which such progress or change will be measured.

For more information about Academic Support and Progression, see [Academic Support and Progression](#) - scroll down and find **3.3 Formal Academic Contract.**

Academic Misconduct

Cheating, plagiarism and other dishonest academic practices have serious consequences in this programme and if you fail to meet academic standards you, as a learner, may be subject to educative processes or penalties.

Plagiarism

Copying, taking or using someone else's work or ideas and presenting them as if they were your own original work or thought, without clear acknowledgement of the actual source.

Use of Artificial Intelligence (AI) Tools

Generative Artificial Intelligence (AI) services such as ChatGPT can be used for learning. When submitting work for assessment, you must adhere to Ara's Assessment and Academic Misconduct policies. In relation to AI, this means;

- You must not present any output from any AI services as your own work in your assessment.
- You must use your own words.
- If you paraphrase or quote from a source such as a textbook, website and AI service, you must reference correctly.

If you submit an assessment using content copied directly from an AI service without acknowledgement, it is a form of academic misconduct.

Cheating

Acting deceitfully or dishonestly to gain academic recognition or an academic result. Examples include copying answers from another person's work, taking useful information secretly into a test or exam, improperly accessing information about questions and/or answers, arranging for someone else to produce an assignment or to sit a test or exam.

Dishonest Academic Practice

Any other act or omission that contravenes Ara academic requirements of a programme or course.

Educative Processes

These are actions designed to assist you, as a learner, in understanding the expected standards and skills needed to succeed and may include:

- A facilitated discussion with an appropriate staff member.
- A formal contract with Learning Services or other appropriate staff member for skills development including specific learning outcomes and timeframes.
- Additional work may be required.
- A formal written warning may be given, or marks deducted.

Learner Behaviour Management

If you are identified as a learner who displays unacceptable behaviour the faculty will monitor your progress and provide support at the earliest stage. This may include referral to Student Support Services to ensure additional support is provided to you.

If you do not respond you may be placed on a behaviour improvement plan This will include identifying, documenting, implementing, and monitoring goals, expected behavioural progress, timelines, and support. If you do not meet the outcomes outlined in the behaviour management plan, you may be moved to probation.

Penalties

These are actions designed to deter misconduct and/or deal with the consequences of it in a fair and appropriate way and may include:

- A decision not to mark or assess the work or record a mark/grade.
- Formally recorded fail / zero for the work concerned which remains on your academic record.
- Cancellation of credit already awarded if the academic misconduct is admitted/ established after assessments have been completed and recorded.
- Formal notice indicating 'Intentional Plagiarism' (or other misconduct) placed on academic record for a specified period of time.
- Formal written warning.

- Probation or suspension from the programme or other penalty.

Probation

If your behaviour, as a learner, is unacceptable and of concern to staff or other learners, you will be advised of this in writing by the Portfolio Manager. This written warning is known as probation.

The written advice must briefly record the deficiencies or concerns, the progress or standards of behaviour which must be met, any assistance available, the time within which progress or change must be demonstrated, and the method and criteria by which such progress or change will be measured.

The progress or change required should be reasonable and the criteria for assessing whether the progress or change has been achieved should be easily understood and capable of being clearly demonstrated.

The written advice must include the warning that failure to make progress or achieve change may lead to suspension and/or cancellation of current enrolment(s) and/or refusal of future enrolment(s).

These requirements are known as the “terms and conditions of probation”.

For more information about probation, see [Probation](#) - scroll down and find **3.4 Probation**.

Exclusion

An exclusion may apply to one or more specified courses, a whole programme, or all enrolment at Ara. An exclusion may also apply to one or more specified services or facilities.

Suspension

Suspension is a short-term exclusion and is the formal process by which you, as a learner, are temporarily prohibited from attending classes in one or more courses and/or is refused access to one or more services/facilities provided by Ara. In serious circumstances a Trespass Notice may also be issued.

Cancellation of Enrolment

Ara may cancel your enrolment as a learner on any of the Education Act (1989) grounds:

- The person is not of good character.
- The person has been guilty of misconduct or a breach of discipline.
- The person is enrolled for full-time instruction in another institution or in a school.
- The person has made insufficient progress in the person's study or training after a reasonable trial at the institution or at another institution.

The decision to cancel or refuse an enrolment may be made only by the Operations Lead or nominee.

Failure to meet the terms and conditions of Academic Contract and/or probation may lead to exclusion.

When a cancellation is being considered, the Portfolio Manager must invite you to an interview.

Refusal of Future Enrolment

Any person may, for good reason and on good evidence, be refused enrolment at Ara generally or in a particular programme or course only by the Operations Lead or by his or her nominee under specific delegation.

Enrolment may be refused on any of the Education Act (1989) grounds.

Failure to meet the terms and conditions of probation may lead to exclusion.

The Portfolio Manager must forward a recommendation to the Operations Lead that the person's application(s) to enrol be refused. The recommendation must state which of the Education Act (1989) grounds is the basis of the recommendation and must include the supporting evidence.

For more information about Exclusion, including Appeal Rights and Other Rights, see [Exclusion](#) - scroll down and find **3.4 Refusal of Enrolment**.

Copyright and Ara Learners

Copyright legislation exists to protect copyright owners from unauthorised copying of their work (literary, dramatic, musical and artistic), and provides them with exclusive rights to how their work is used.

During your study with us we will endeavour to educate you on copyright use, including referencing, approved copying, and proper use of electronic material and downloadable music.

Infringement of copyright regulations may result in civil or criminal prosecution against you, as the learner, and/or Ara. Infringement by you, as a learner, may also be considered academic misconduct and result in penalties.

For more information about Copyright, see [Copyright](#).

Kā tū whare me kā rauemi Facilities and resources



Kā tū whare - Facilities

Faculty related Health & Safety

Please refer to the [Learner Information Handbook](#) for general Health and Safety information and evacuation details. In an emergency advise a staff member, and if no one is available phone 111.

Refer to your tutors and laboratory managers for instructions and specific Health & Safety information related to laboratory and field activities.

Personal Protective Equipment (PPE)

The following safety equipment (PPE) will be provided by Ara:

Safety Gloves	Safety glasses	Cotton overalls	Safety boots
			
Welding helmet	Gloves - welding	Ear Muffs	Gas welding goggles
			

Every workshop has a first aid kit and staff trained in first aid - if you are off site as part of your programme, your tutor will carry an appropriate first aid kit.

Defibrillators

There are defibrillators located in the following locations in **V Block**:

- Staffroom.
- On the wall in the corridor outside the Electrical Technician's office (Room V207- 2nd Floor).

We encourage you to report 'near miss' incidents to Faculty staff as Ara is keen to minimise hazards on campus and will use this information to inform changes that reduce risks.

Please note: Headphones or earbuds are NOT to be worn in class or on site

After Hours Access

Woolston Campus

Learners can access V Block until 9pm Monday – Thursday when night classes are on.

Staff and learners have access to SSB from 7.30am-6pm Monday – Thursday, and 4.30pm Fridays.

Timaru Campus

Staff and learners have access to their specialist buildings from 7am–10pm, seven days a week.

Appendix One

Equipment Requirements

The following equipment and/or uniform is recommended but not compulsory for learners enrolled in this course. This kit is only available at the Hornby Branch.

We suggest that all items are named by either engraving or use of a permanent marker.

Supplier Information

George Henry & Co Ltd

258 Main South Road
Hornby
Christchurch
sales@georgehenry.co.nz

Quote # 42931 (Pobrien)

Branch: Hornby | Branch phone: 03 961 2777

Equipment			
SKU	Item	Qty	Price *
TB8372	Grizzly Pro Wide Mouth Cargo Bag 410mm	1	39.13
HT9170	Mig pliers Weldco WDC0813	1	24.29
ME5378	Tape Measure 8Mtr George Henry & Co	1	10.43
ME5936	Combination Square Met 300mm Blumol M404	1	127.08
ME8420	Ruler 300 Metric English Toledo	1	20.39
FL9680	File Set 5pc 8" Bahco	1	50.43
ME8412	Ruler 150b Inch/Metric Toledo	1	10.68
ME2830	Divider Spring 150mm Groz	1	21.59
ME5943	Vernier Caliper 6".150mm Vertex M400	1	26.90
ME2804	Caliper Spring Outside 150mm Groz	1	21.59
ME2810	Caliper Jenny 150mm Groz	1	15.93
WE0505	Hammer Chipping Welding Spring Handle	1	11.39
MS2900	Engineers Black Book Mk3	1	75.00
BR1423	Brush Crevice Brass Coated Red	1	4.49

PU2512	Chisel Flat 15mm x 160mm TopTul	1	8.69
SE14263	AutoWelsafe4SensorTerminatorTitanium	1	129.56

*Indicative price ex GST (including any potential discounts to Ara learners). Price can change without notice.

Disclaimer:

All care and attention has been given to ensure the information in this document is accurate at the time of publishing. Ara does not take responsibility for any loss or harm incurred as a result of reliance upon any information which is incorrect or out of date. This document was last updated on 11 June 2026.



Want to find out more?

For details and information about making the most of your study at Ara, visit www.myara.ac.nz or get the **downloadable app**.

Get in touch if you have any questions: **0800 24 24 76** | info@ara.ac.nz